

A16387

Leader in Biomolecular Solutions for Life Science



IMPG1 Rabbit pAb

Catalog No.: A16387

Basic Information

Observed MW

80kDa

Calculated MW

89kDa

Category

Polyclonal Antibody

Applications

WB,ELISA

Cross-Reactivity

Rat

Background

This gene encodes a protein that is a major component of the retinal interphotoreceptor matrix. The encoded protein is a proteoglycan that is thought to play a role in maintaining viability of photoreceptor cells and in adhesion of the neural retina to the retinal pigment epithelium. Alternate splicing results in multiple transcript variants.

Recommended Dilutions

WB 1:500 - 1:2000

Immunogen Information

Gene ID

3617

Swiss Prot

Q17R60

Immunogen

Recombinant fusion protein containing a sequence corresponding to amino acids 21-300 of human IMPG1 (NP_001554.2).

Synonyms

RP91; VMD4; GP147; SPACR; IPM150; IMPG1

Contact

 www.abclonal.com

Product Information

Source

Rabbit

Isotype

IgG

Purification

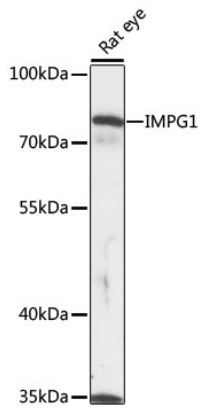
Affinity purification

Storage

Store at -20°C. Avoid freeze / thaw cycles.

Buffer: PBS with 0.01% thimerosal, 50% glycerol, pH7.3.

Validation Data



Western blot analysis of lysates from rat eye, using IMPG1 Rabbit pAb (A16387) at 1:1000 dilution.

Secondary antibody: HRP Goat Anti-Rabbit IgG (H+L) (AS014) at 1:10000 dilution.

Lysates/proteins: 25µg per lane.

Blocking buffer: 3% nonfat dry milk in TBST.

Detection: ECL Basic Kit (RM00020).

Exposure time: 10s.