

A16369

Leader in Biomolecular Solutions for Life Science



Egr4 Rabbit pAb

Catalog No.: A16369

Basic Information

Observed MW

58kDa

Calculated MW

62kDa

Category

Polyclonal Antibody

Applications

WB,ELISA

Cross-Reactivity

Mouse

Background

Predicted to enable DNA-binding transcription activator activity, RNA polymerase II-specific and RNA polymerase II cis-regulatory region sequence-specific DNA binding activity. Predicted to be involved in positive regulation of transcription by RNA polymerase II. Predicted to be located in nucleus. Is expressed in several structures, including central nervous system; genitourinary system; and tooth. Orthologous to human EGR4 (early growth response 4).

Recommended Dilutions

WB 1:500 - 1:2000

ELISA Recommended starting concentration is 1 µg/mL. Please optimize the concentration based on your specific assay requirements.

Immunogen Information

Gene ID

13656

Swiss Prot

Q05215

Immunogen

Recombinant protein (or fragment). This information is considered to be commercially sensitive.

Synonyms

NGFIC; NGF1-C; NGFI-C; pAT133; Egr4

Contact

 www.abclonal.com

Product Information

Source

Rabbit

Isotype

IgG

Purification

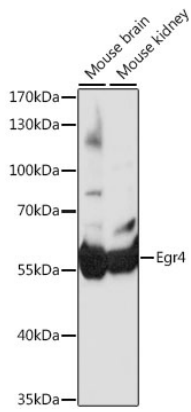
Affinity purification

Storage

Store at -20°C. Avoid freeze / thaw cycles.

Buffer: PBS with 0.01% thimerosal, 50% glycerol, pH7.3.

Validation Data



Western blot analysis of various lysates using Egr4 Rabbit pAb (A16369) at 1:1000 dilution.

Secondary antibody: HRP-conjugated Goat anti-Rabbit IgG (H+L) (AS014) at 1:10000 dilution.

Lysates/proteins: 25µg per lane.

Blocking buffer: 3% nonfat dry milk in TBST.

Detection: ECL Basic Kit (RM00020).

Exposure time: 30s.