

A16330

Leader in Biomolecular Solutions for Life Science



LARP6 Rabbit pAb

Catalog No.: A16330

1 Publications

Basic Information

Observed MW

54kDa

Calculated MW

55kDa

Category

Polyclonal Antibody

Applications

WB,ELISA

Cross-Reactivity

Human,Mouse,Rat

Background

Enables RNA binding activity and myosin binding activity. Involved in positive regulation of collagen biosynthetic process; positive regulation of mRNA binding activity; and positive regulation of translation. Located in nucleus. Part of polysome.

Recommended Dilutions

WB 1:500 - 1:2000

ELISA Recommended starting concentration is 1 µg/mL. Please optimize the concentration based on your specific assay requirements.

Immunogen Information

Gene ID

55323

Swiss Prot

Q9BRS8

Immunogen

Recombinant fusion protein containing a sequence corresponding to amino acids 1-320 of human LARP6 (NP_060827.2).

Synonyms

ACHN; LARP6

Contact



www.abclonal.com

Product Information

Source

Rabbit

Isotype

IgG

Purification

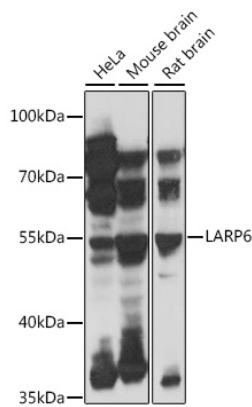
Affinity purification

Storage

Store at -20°C. Avoid freeze / thaw cycles.

Buffer: PBS with 0.01% thimerosal, 50% glycerol, pH7.3.

Validation Data



Western blot analysis of various lysates using LARP6 Rabbit pAb (A16330) at 1:1000 dilution.
Secondary antibody: HRP-conjugated Goat anti-Rabbit IgG (H+L) (AS014) at 1:10000 dilution.
Lysates/proteins: 25µg per lane.
Blocking buffer: 3% nonfat dry milk in TBST.
Detection: ECL Basic Kit (RM00020).
Exposure time: 3s.