

A16320

Leader in Biomolecular Solutions for Life Science



# FUT4 Rabbit pAb

Catalog No.: A16320 **2 Publications**

## Basic Information

### Observed MW

59kDa

### Calculated MW

59kDa

### Category

Polyclonal Antibody

### Applications

WB,IHC-P,IF/ICC,ELISA

### Cross-Reactivity

Human,Mouse,Rat

## Background

The product of this gene transfers fucose to N-acetylglucosamine polysaccharides to generate fucosylated carbohydrate structures. It catalyzes the synthesis of the non-sialylated antigen, Lewis x (CD15).

## Recommended Dilutions

<b>WB</b>	1:500 - 1:2000
<b>IHC-P</b>	1:50 - 1:200
<b>IF/ICC</b>	1:50 - 1:200
<b>ELISA</b>	Recommended starting concentration is 1 µg/mL. Please optimize the concentration based on your specific assay requirements.

## Contact

 [www.abclonal.com](http://www.abclonal.com)

## Immunogen Information

<b>Gene ID</b>	<b>Swiss Prot</b>
2526	P22083

### Immunogen

Recombinant fusion protein containing a sequence corresponding to amino acids 186-331 of human FUT4 (NP\_002024.1).

### Synonyms

LeX; CD15; ELFT; FCT3A; FUTIV; SSEA-1; FUC-TIV; FUT4

## Product Information

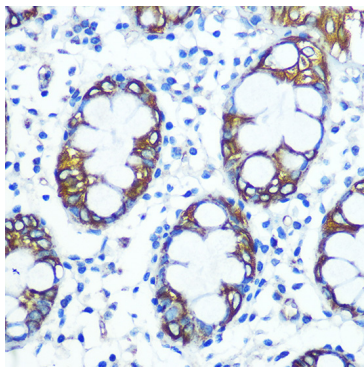
<b>Source</b>	<b>Isotype</b>	<b>Purification</b>
Rabbit	IgG	Affinity purification

### Storage

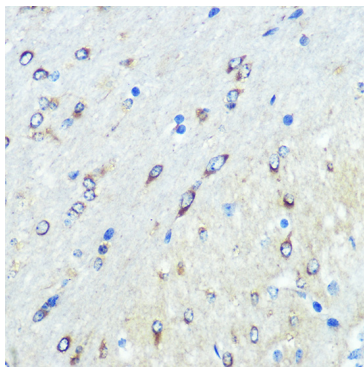
Store at -20°C. Avoid freeze / thaw cycles.  
Buffer: PBS with 0.09% Sodium azide,50% glycerol,pH7.3.

## Validation Data

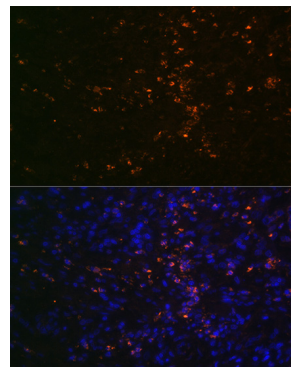
---



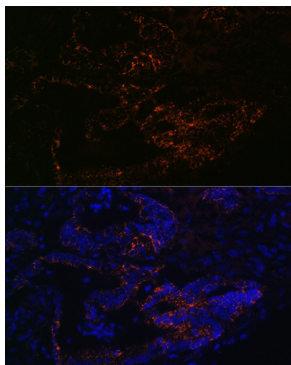
Immunohistochemistry analysis of paraffin-embedded Human colon using FUT4 Rabbit pAb (A16320) at dilution of 1:100 (40x lens). Microwave antigen retrieval performed with 0.01M PBS Buffer (pH 7.2) prior to IHC staining.



Immunohistochemistry analysis of paraffin-embedded Mouse brain using FUT4 Rabbit pAb (A16320) at dilution of 1:100 (40x lens). Microwave antigen retrieval performed with 0.01M PBS Buffer (pH 7.2) prior to IHC staining.



Immunofluorescence analysis of paraffin-embedded human colon carcinoma using FUT4 Rabbit pAb (A16320) at dilution of 1:100 (40x lens). Secondary antibody: Cy3-conjugated Goat anti-Rabbit IgG (H+L) (AS007) at 1:500 dilution. Blue: DAPI for nuclear staining.



Immunofluorescence analysis of paraffin-embedded human colon carcinoma using FUT4 Rabbit pAb (A16320) at dilution of 1:100 (40x lens). Secondary antibody: Cy3-conjugated Goat anti-Rabbit IgG (H+L) (AS007) at 1:500 dilution. Blue: DAPI for nuclear staining.