

A16315

Leader in Biomolecular Solutions for Life Science



SOSTDC1 Rabbit pAb

Catalog No.: A16315

Basic Information

Observed MW

26kDa

Calculated MW

23kDa

Category

Polyclonal Antibody

Applications

WB, ELISA

Cross-Reactivity

Human, Mouse, Rat

Background

This gene is a member of the sclerostin family and encodes an N-glycosylated, secreted protein with a C-terminal cystine knot-like domain. This protein functions as a bone morphogenetic protein (BMP) antagonist. Specifically, it directly associates with BMPs, prohibiting them from binding their receptors, thereby regulating BMP signaling during cellular proliferation, differentiation, and programmed cell death.

Recommended Dilutions

WB 1:500 - 1:2000

Immunogen Information

Gene ID

25928

Swiss Prot

Q6X4U4

Immunogen

Recombinant fusion protein containing a sequence corresponding to amino acids 115-206 of human SOSTDC1 (NP_056279.1).

Synonyms

DAND7; USAG1; CDA019; ECTODIN; SOSTDC1

Contact



www.abclonal.com

Product Information

Source

Rabbit

Isotype

IgG

Purification

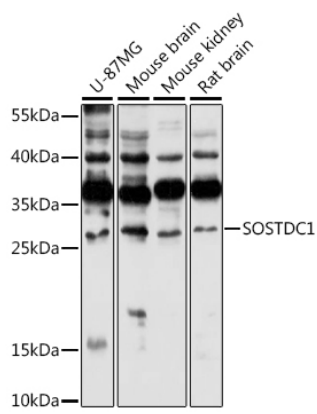
Affinity purification

Storage

Store at -20°C. Avoid freeze / thaw cycles.

Buffer: PBS with 0.01% thimerosal, 50% glycerol, pH7.3.

Validation Data



Western blot analysis of various lysates using SOSTDC1 Rabbit pAb (A16315) at 1:1000 dilution. Secondary antibody: HRP Goat Anti-Rabbit IgG (H+L) (AS014) at 1:10000 dilution. Lysates/proteins: 25μg per lane. Blocking buffer: 3% nonfat dry milk in TBST. Detection: ECL Basic Kit (RM00020). Exposure time: 3min.