

A16222

Leader in Biomolecular Solutions for Life Science



PIMREG Rabbit pAb

Catalog No.: A16222 **1 Publications**

Basic Information

Observed MW

27kDa

Calculated MW

27kDa

Category

Polyclonal Antibody

Applications

WB,ELISA

Cross-Reactivity

Mouse,Rat

Background

Predicted to be involved in cell division. Located in nucleolus and nucleoplasm.

Recommended Dilutions

WB 1:500 - 1:1000

ELISA Recommended starting concentration is 1 µg/mL. Please optimize the concentration based on your specific assay requirements.

Immunogen Information

Gene ID

54478

Swiss Prot

Q9BSJ6

Immunogen

Recombinant fusion protein containing a sequence corresponding to amino acids 1-100 of human PIMREG (NP_001182157.1).

Synonyms

CATS; RCS1; FAM64A; PIMREG

Contact

 www.abclonal.com

Product Information

Source

Rabbit

Isotype

IgG

Purification

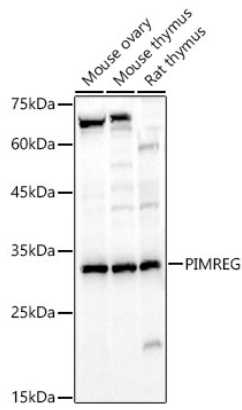
Affinity purification

Storage

Store at -20°C. Avoid freeze / thaw cycles.

Buffer: PBS with 0.05% proclin300,50% glycerol,pH7.3.

Validation Data



Western blot analysis of various lysates, using PIMREG Rabbit pAb (A16222) at 1:700 dilution.

Secondary antibody: HRP-conjugated Goat anti-Rabbit IgG (H+L) (AS014) at 1:10000 dilution.

Lysates/proteins: 25 μ g per lane.

Blocking buffer: 3% nonfat dry milk in TBST.

Detection: ECL Enhanced Kit (RM00021).

Exposure time: 30s.