

A16207

Leader in Biomolecular Solutions for Life Science



## CXCL6 Rabbit pAb

Catalog No.: A16207

1 Publications

### Basic Information

#### Observed MW

17kDa

#### Calculated MW

12kDa

#### Category

Polyclonal Antibody

#### Applications

WB, ELISA

#### Cross-Reactivity

Human, Mouse

### Background

The protein encoded by this gene is a member CXC chemokine family. The encoded protein is a chemotactic for neutrophil granulocytes and has antibacterial action against gram-negative and gram-positive bacteria. This gene and other members of the CXC chemokine gene family form a gene cluster in a region of chromosome 4q.

### Recommended Dilutions

WB 1:500 - 1:2000

### Immunogen Information

#### Gene ID

6372

#### Swiss Prot

P80162

#### Immunogen

Recombinant fusion protein containing a sequence corresponding to amino acids 38-114 of human CXCL6 (NP\_002984.1).

#### Synonyms

GCP2; CKA-3; GCP-2; SCYB6; CXCL6

### Contact



[www.abclonal.com](http://www.abclonal.com)

### Product Information

#### Source

Rabbit

#### Isotype

IgG

#### Purification

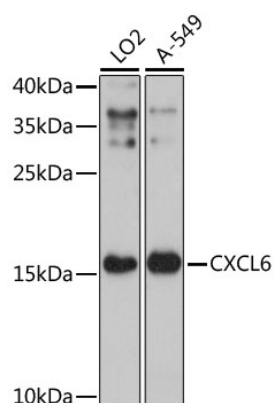
Affinity purification

#### Storage

Store at -20°C. Avoid freeze / thaw cycles.

Buffer: PBS with 0.01% thimerosal, 50% glycerol, pH 7.3.

## Validation Data



Western blot analysis of various lysates using CXCL6 Rabbit pAb (A16207) at 1:3000 dilution.

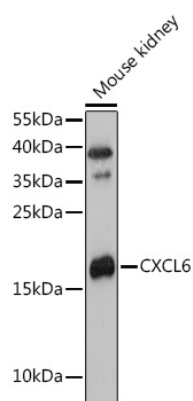
Secondary antibody: HRP Goat Anti-Rabbit IgG (H+L) (AS014) at 1:10000 dilution.

Lysates/proteins: 25µg per lane.

Blocking buffer: 3% nonfat dry milk in TBST.

Detection: ECL Enhanced Kit (RM00021).

Exposure time: 90s.



Western blot analysis of lysates from Mouse kidney, using CXCL6 Rabbit pAb (A16207) at 1:3000 dilution.

Secondary antibody: HRP Goat Anti-Rabbit IgG (H+L) (AS014) at 1:10000 dilution.

Lysates/proteins: 25µg per lane.

Blocking buffer: 3% nonfat dry milk in TBST.

Detection: ECL Basic Kit (RM00020).

Exposure time: 90s.