

A16179

Leader in Biomolecular Solutions for Life Science



CCDC110 Rabbit pAb

Catalog No.: A16179

Basic Information

Observed MW

97kDa

Calculated MW

97kDa

Category

Polyclonal Antibody

Applications

WB,ELISA

Cross-Reactivity

Mouse,Rat

Background

Predicted to be located in nucleus. Predicted to be active in cytoskeleton.

Recommended Dilutions

WB 1:500 - 1:2000

ELISA Recommended starting concentration is 1 µg/mL. Please optimize the concentration based on your specific assay requirements.

Immunogen Information

Gene ID

256309

Swiss Prot

Q8TBZ0

Immunogen

Recombinant protein (or fragment). This information is considered to be commercially sensitive.

Synonyms

CT52; KMHN1; KM-HN-1; CCDC110

Contact

 www.abclonal.com

Product Information

Source

Rabbit

Isotype

IgG

Purification

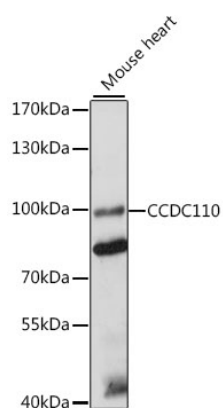
Affinity purification

Storage

Store at -20°C. Avoid freeze / thaw cycles.

Buffer: PBS with 0.01% thimerosal, 50% glycerol, pH7.3.

Validation Data



Western blot analysis of lysates from mouse heart, using CCDC110 Rabbit pAb (A16179) at 1:1000 dilution.

Secondary antibody: HRP-conjugated Goat anti-Rabbit IgG (H+L) (AS014) at 1:10000 dilution.

Lysates/proteins: 25µg per lane.

Blocking buffer: 3% nonfat dry milk in TBST.

Detection: ECL Basic Kit (RM00020).

Exposure time: 10s.