

A16172

Leader in Biomolecular Solutions for Life Science



# MEI1 Rabbit pAb

Catalog No.: A16172

## Basic Information

### Observed MW

71kDa

### Calculated MW

141kDa

### Category

Polyclonal Antibody

### Applications

WB,ELISA

### Cross-Reactivity

Human,Mouse,Rat

## Background

Predicted to be involved in meiosis I. Predicted to act upstream of or within gamete generation; meiotic spindle organization; and meiotic telomere clustering. Implicated in gestational trophoblastic neoplasm.

## Recommended Dilutions

**WB** 1:500 - 1:2000

**ELISA** Recommended starting concentration is 1 µg/mL. Please optimize the concentration based on your specific assay requirements.

## Immunogen Information

### Gene ID

150365

### Swiss Prot

Q5TIA1

### Immunogen

Recombinant fusion protein containing a sequence corresponding to amino acids 1000-1170 of human MEI1 (NP\_689726.3).

### Synonyms

HYDM3; SPATA38; MEI1

## Contact



[www.abclonal.com](http://www.abclonal.com)

## Product Information

### Source

Rabbit

### Isotype

IgG

### Purification

Affinity purification

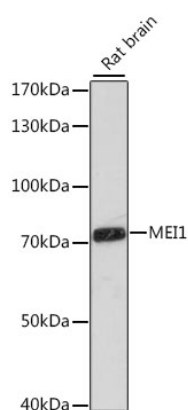
### Storage

Store at -20°C. Avoid freeze / thaw cycles.

Buffer: PBS with 0.01% thimerosal, 50% glycerol, pH7.3.

## Validation Data

---



Western blot analysis of lysates from rat brain, using MEI1 Rabbit pAb (A16172) at 1:1000 dilution.

Secondary antibody: HRP-conjugated Goat anti-Rabbit IgG (H+L) (AS014) at 1:10000 dilution.

Lysates/proteins: 25µg per lane.

Blocking buffer: 3% nonfat dry milk in TBST.

Detection: ECL Basic Kit (RM00020).

Exposure time: 30s.