

A16167

Leader in Biomolecular Solutions for Life Science



S100A16 Rabbit pAb

Catalog No.: A16167

Basic Information

Observed MW

12kDa

Calculated MW

12kDa

Category

Polyclonal Antibody

Applications

WB,ELISA

Cross-Reactivity

Human,Mouse,Rat

Background

Enables calcium ion binding activity and protein homodimerization activity. Predicted to act upstream of or within response to calcium ion. Located in several cellular components, including cytosol; extracellular space; and nucleolus.

Recommended Dilutions

WB 1:500 - 1:2000

ELISA Recommended starting concentration is 1 µg/mL. Please optimize the concentration based on your specific assay requirements.

Immunogen Information

Gene ID

140576

Swiss Prot

Q96FQ6

Immunogen

Recombinant fusion protein containing a sequence corresponding to amino acids 1-103 of human S100A16 (NP_525127.1).

Synonyms

AAG13; S100F; DT1P1A7; S100A16

Contact

 www.abclonal.com

Product Information

Source

Rabbit

Isotype

IgG

Purification

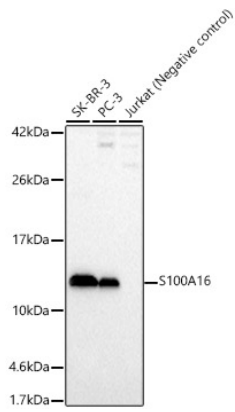
Affinity purification

Storage

Store at -20°C. Avoid freeze / thaw cycles.

Buffer: PBS with 0.05% proclin300,50% glycerol,pH7.3.

Validation Data



Western blot analysis of various lysates, using S100A16 Rabbit pAb (A16167) at 1:2000 dilution.

Secondary antibody: HRP-conjugated Goat anti-Rabbit IgG (H+L) (AS014) at 1:10000 dilution.

Lysates/proteins: 25µg per lane.

Blocking buffer: 3% nonfat dry milk in TBST.

Detection: ECL Basic Kit (RM00020).

Exposure time: 30s.