

A16165

Leader in Biomolecular Solutions for Life Science



# GPR151 Rabbit pAb

Catalog No.: A16165

## Basic Information

### Observed MW

47kDa

### Calculated MW

47kDa

### Category

Polyclonal Antibody

### Applications

WB,ELISA

### Cross-Reactivity

Human,Mouse,Rat

## Background

This gene encodes an orphan member of the class A rhodopsin-like family of G-protein-coupled receptors (GPCRs). Within the rhodopsin-like family, this gene is a member of the SOG subfamily that includes somatostatin, opioid, galanin, and kisspeptin receptors. The orthologous mouse gene has a restricted pattern of neuronal expression which is induced following nerve injury. All GPCRs have a transmembrane domain that includes seven transmembrane alpha-helices. A general feature of GPCR signaling is the agonist-induced conformational change in the receptor, leading to activation of the heterotrimeric G protein. The activated G protein then binds to and activates numerous downstream effector proteins, which generate second messengers that mediate a broad range of cellular and physiological processes.

## Recommended Dilutions

**WB** 1:500 - 1:1000

**ELISA** Recommended starting concentration is 1 µg/mL. Please optimize the concentration based on your specific assay requirements.

## Immunogen Information

### Gene ID

134391

### Swiss Prot

Q8TDV0

### Immunogen

Recombinant protein (or fragment). This information is considered to be commercially sensitive.

### Synonyms

GPCR; PGR7; GALR4; GALRL; GPCR-2037; GPR151

## Contact

 [www.abclonal.com](http://www.abclonal.com)

## Product Information

### Source

Rabbit

### Isotype

IgG

### Purification

Affinity purification

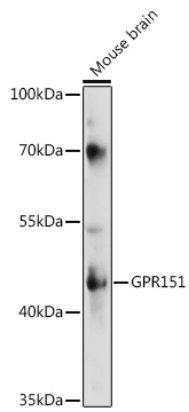
### Storage

Store at -20°C. Avoid freeze / thaw cycles.

Buffer: PBS with 0.01% thimerosal, 50% glycerol, pH7.3.

## Validation Data

---



Western blot analysis of various lysates using GPR151 Rabbit pAb (A16165) at 1:1000 dilution.

Secondary antibody: HRP-conjugated Goat anti-Rabbit IgG (H+L) (AS014) at 1:10000 dilution.

Lysates/proteins: 25µg per lane.

Blocking buffer: 3% nonfat dry milk in TBST.

Detection: ECL Enhanced Kit (RM00021).

Exposure time: 300s.