

A16163

Leader in Biomolecular Solutions for Life Science



GPR62 Rabbit pAb

Catalog No.: A16163

Basic Information

Observed MW

39kDa

Calculated MW

38kDa

Category

Polyclonal Antibody

Applications

WB,ELISA

Cross-Reactivity

Human,Mouse,Rat

Background

Enables arrestin family protein binding activity. Involved in G protein-coupled receptor signaling pathway; inositol phosphate-mediated signaling; and positive regulation of cAMP-mediated signaling. Located in endosome and plasma membrane. Part of receptor complex.

Recommended Dilutions

WB 1:500 - 1:1000

Immunogen Information

Gene ID

118442

Swiss Prot

Q9BZJ7

Immunogen

A synthetic peptide corresponding to a sequence within amino acids 150-250 of human GPR62 (NP_543141.3).

Synonyms

GPCR8; KPG_005; GPR62

Contact



www.abclonal.com

Product Information

Source

Rabbit

Isotype

IgG

Purification

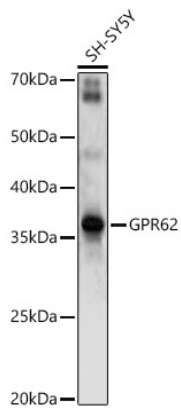
Affinity purification

Storage

Store at -20°C. Avoid freeze / thaw cycles.

Buffer: PBS with 0.01% thimerosal, 50% glycerol, pH7.3.

Validation Data



Western blot analysis of lysates from SH-SY5Y cells, using GPR62 Rabbit pAb (A16163) at 1:1000 dilution.

Secondary antibody: HRP Goat Anti-Rabbit IgG (H+L) (AS014) at 1:10000 dilution.

Lysates/proteins: 25µg per lane.

Blocking buffer: 3% nonfat dry milk in TBST.

Detection: ECL Enhanced Kit (RM00021).

Exposure time: 90s.