

A16161

Leader in Biomolecular Solutions for Life Science



# MAS1L Rabbit pAb

Catalog No.: A16161

## Basic Information

### Observed MW

42kDa

### Calculated MW

42kDa

### Category

Polyclonal Antibody

### Applications

WB,ELISA

### Cross-Reactivity

Human

## Background

Predicted to enable G protein-coupled receptor activity. Predicted to be involved in G protein-coupled receptor signaling pathway. Located in cytosol; nucleoplasm; and plasma membrane.

## Recommended Dilutions

WB 1:500 - 1:2000

## Immunogen Information

### Gene ID

116511

### Swiss Prot

P35410

### Immunogen

Recombinant fusion protein containing a sequence corresponding to amino acids 1-70 of human MAS1L (NP\_443199.1).

### Synonyms

MRG; MAS-L; dJ994E9.2; MAS1L

## Contact



[www.abclonal.com](http://www.abclonal.com)

## Product Information

### Source

Rabbit

### Isotype

IgG

### Purification

Affinity purification

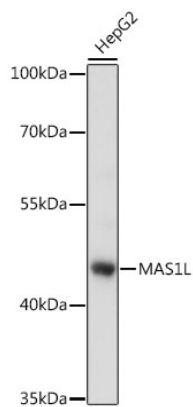
### Storage

Store at -20°C. Avoid freeze / thaw cycles.

Buffer: PBS with 0.01% thimerosal, 50% glycerol, pH7.3.

## Validation Data

---



Western blot analysis of lysates from HepG2 cells, using MAS1L Rabbit pAb (A16161) at 1:1000 dilution.

Secondary antibody: HRP Goat Anti-Rabbit IgG (H+L) (AS014) at 1:10000 dilution.

Lysates/proteins: 25µg per lane.

Blocking buffer: 3% nonfat dry milk in TBST.

Detection: ECL Basic Kit (RM00020).

Exposure time: 3s.