

A16140

Leader in Biomolecular Solutions for Life Science



# KCNK15 Rabbit pAb

Catalog No.: A16140

## Basic Information

---

### Observed MW

36kDa

### Calculated MW

36kDa

### Category

Polyclonal Antibody

### Applications

WB,ELISA

### Cross-Reactivity

Human

## Background

---

This gene encodes one of the members of the superfamily of potassium channel proteins containing two pore-forming P domains. The product of this gene has not been shown to be a functional channel, however, it may require other non-pore-forming proteins for activity.

## Recommended Dilutions

---

WB 1:500 - 1:2000

## Immunogen Information

---

### Gene ID

60598

### Swiss Prot

Q9H427

### Immunogen

A synthetic peptide corresponding to a sequence within amino acids 200-300 of human KCNK15 (NP\_071753.2).

### Synonyms

KT3.3; TASK5; KCNK11; KCNK14; TASK-5; K2p15.1; dJ781B1.1; KCNK15

## Contact

---



[www.abclonal.com](http://www.abclonal.com)

## Product Information

---

### Source

Rabbit

### Isotype

IgG

### Purification

Affinity purification

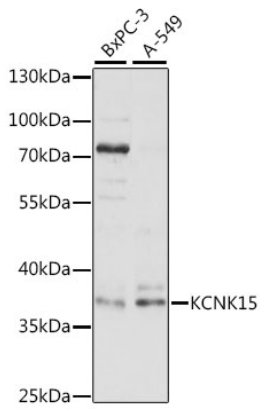
### Storage

Store at -20°C. Avoid freeze / thaw cycles.

Buffer: PBS with 0.01% thimerosal, 50% glycerol, pH7.3.

## Validation Data

---



Western blot analysis of various lysates using KCNK15 Rabbit pAb (A16140) at 1:1000 dilution.

Secondary antibody: HRP Goat Anti-Rabbit IgG (H+L) (AS014) at 1:10000 dilution.

Lysates/proteins: 25µg per lane.

Blocking buffer: 3% nonfat dry milk in TBST.

Detection: ECL Basic Kit (RM00020).

Exposure time: 60s.