

A16137

Leader in Biomolecular Solutions for Life Science



CHPT1 Rabbit pAb

Catalog No.: A16137

Basic Information

Observed MW

50kDa

Calculated MW

45kDa

Category

Polyclonal Antibody

Applications

WB,ELISA

Cross-Reactivity

Human

Background

Enables diacylglycerol cholinephosphotransferase activity. Involved in phosphatidylcholine biosynthetic process and platelet activating factor biosynthetic process. Predicted to be located in Golgi membrane. Predicted to be active in Golgi apparatus and endoplasmic reticulum membrane.

Recommended Dilutions

WB 1:500 - 1:2000

ELISA Recommended starting concentration is 1 µg/mL. Please optimize the concentration based on your specific assay requirements.

Immunogen Information

Gene ID

56994

Swiss Prot

Q8WUD6

Immunogen

A synthetic peptide corresponding to a sequence within amino acids 1-100 of human CHPT1 (NP_064629.2).

Synonyms

CPT; CPT1; CHPT1

Contact

 www.abclonal.com

Product Information

Source

Rabbit

Isotype

IgG

Purification

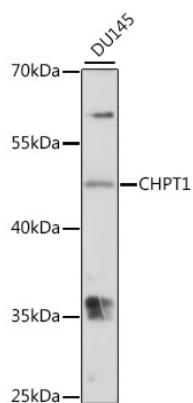
Affinity purification

Storage

Store at -20°C. Avoid freeze / thaw cycles.

Buffer: PBS with 0.01% thimerosal, 50% glycerol, pH7.3.

Validation Data



Western blot analysis of lysates from DU145 cells, using CHPT1 Rabbit pAb (A16137) at 1:1000 dilution.

Secondary antibody: HRP-conjugated Goat anti-Rabbit IgG (H+L) (AS014) at 1:10000 dilution.

Lysates/proteins: 25µg per lane.

Blocking buffer: 3% nonfat dry milk in TBST.

Detection: ECL Basic Kit (RM00020).

Exposure time: 30s.