

A16084

Leader in Biomolecular Solutions for Life Science



# RHBDL1 Rabbit pAb

Catalog No.: A16084

## Basic Information

### Observed MW

48kDa

### Calculated MW

48kDa

### Category

Polyclonal Antibody

### Applications

WB,ELISA

### Cross-Reactivity

Human,Mouse,Rat

## Background

This gene encodes a protein similar to Rhomboid in Drosophila which is involved in signalling in the Spitz/epidermal growth factor receptor/mitogen-activated protein kinase pathway. The Rhomboid family of proteins consists of intramembrane serine proteases containing several transmembrane domains. Alternative splicing results in multiple transcript variants encoding different isoforms.

## Recommended Dilutions

**WB** 1:500 - 1:2000

**ELISA** Recommended starting concentration is 1 µg/mL. Please optimize the concentration based on your specific assay requirements.

## Immunogen Information

### Gene ID

9028

### Swiss Prot

O75783

### Immunogen

Recombinant protein (or fragment). This information is considered to be commercially sensitive.

### Synonyms

RRP; RHBDL; RHBDL1

## Contact

 [www.abclonal.com](http://www.abclonal.com)

## Product Information

### Source

Rabbit

### Isotype

IgG

### Purification

Affinity purification

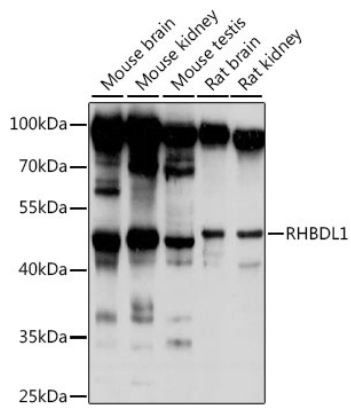
### Storage

Store at -20°C. Avoid freeze / thaw cycles.

Buffer: PBS with 0.01% thimerosal, 50% glycerol, pH7.3.

## Validation Data

---



Western blot analysis of various lysates using RHBDL1 Rabbit pAb (A16084) at 1:1000 dilution.

Secondary antibody: HRP-conjugated Goat anti-Rabbit IgG (H+L) (AS014) at 1:10000 dilution.

Lysates/proteins: 25 $\mu$ g per lane.

Blocking buffer: 3% nonfat dry milk in TBST.

Detection: ECL Basic Kit (RM00020).

Exposure time: 10s.