

A16069

Leader in Biomolecular Solutions for Life Science



SNAPC2 Rabbit pAb

Catalog No.: A16069

Basic Information

Observed MW

Refer to figures

Calculated MW

36kDa

Category

Polyclonal Antibody

Applications

WB,ELISA

Cross-Reactivity

Human,Mouse

Background

This gene encodes a subunit of the snRNA-activating protein complex which is associated with the TATA box-binding protein. The encoded protein is necessary for RNA polymerase II and III dependent small-nuclear RNA gene transcription. Alternative splicing results in multiple transcript variants.

Recommended Dilutions

WB 1:500 - 1:2000

ELISA Recommended starting concentration is 1 µg/mL. Please optimize the concentration based on your specific assay requirements.

Immunogen Information

Gene ID

6618

Swiss Prot

Q13487

Immunogen

Recombinant protein (or fragment). This information is considered to be commercially sensitive.

Synonyms

SNAP45; PTFDELTA; SNAPC2

Contact



www.abclonal.com

Product Information

Source

Rabbit

Isotype

IgG

Purification

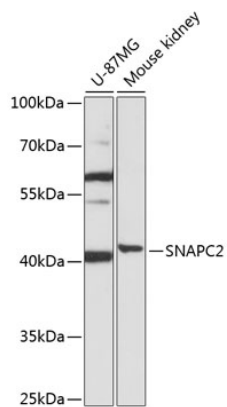
Affinity purification

Storage

Store at -20°C. Avoid freeze / thaw cycles.

Buffer: PBS with 0.01% thimerosal, 50% glycerol, pH7.3.

Validation Data



Western blot analysis of various lysates using SNAPC2 Rabbit pAb (A16069) at 1:1000 dilution.

Secondary antibody: HRP-conjugated Goat anti-Rabbit IgG (H+L) (AS014) at 1:10000 dilution.

Lysates/proteins: 25µg per lane.

Blocking buffer: 3% nonfat dry milk in TBST.

Detection: ECL Basic Kit (RM00020).

Exposure time: 30s.