

A16027

Leader in Biomolecular Solutions for Life Science



PRRT2 Rabbit pAb

Catalog No.: A16027

Basic Information

Observed MW

35kDa

Calculated MW

35kDa

Category

Polyclonal Antibody

Applications

WB,ELISA

Cross-Reactivity

Human,Mouse

Background

This gene encodes a transmembrane protein containing a proline-rich domain in its N-terminal half. Studies in mice suggest that it is predominantly expressed in brain and spinal cord in embryonic and postnatal stages. Mutations in this gene are associated with episodic kinesigenic dyskinesia-1. Alternatively spliced transcript variants encoding different isoforms have been found for this gene.

Recommended Dilutions

WB 1:500 - 1:2000

Immunogen Information

Gene ID

112476

Swiss Prot

Q7Z6L0

Immunogen

Recombinant fusion protein containing a sequence corresponding to amino acids 20-130 of human PRRT2 (NP_660282.2).

Synonyms

PKC; EKD1; ICCA; BFIC2; BFIS2; DSPB3; DYT10; FICCA; IFITMD1; PRRT2

Contact



www.abclonal.com

Product Information

Source

Rabbit

Isotype

IgG

Purification

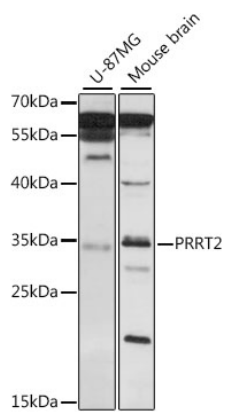
Affinity purification

Storage

Store at -20°C. Avoid freeze / thaw cycles.

Buffer: PBS with 0.01% thimerosal,50% glycerol,pH7.3.

Validation Data



Western blot analysis of various lysates using PRRT2 Rabbit pAb (A16027) at 1:1000 dilution.
Secondary antibody: HRP Goat Anti-Rabbit IgG (H+L) (AS014) at 1:10000 dilution.
Lysates/proteins: 25 μ g per lane.
Blocking buffer: 3% nonfat dry milk in TBST.
Detection: ECL Basic Kit (RM00020).
Exposure time: 5s.