

A15998

Leader in Biomolecular Solutions for Life Science



GPR4 Rabbit pAb

Catalog No.: A15998

Basic Information

Observed MW

45kDa

Calculated MW

41kDa

Category

Polyclonal Antibody

Applications

WB,ELISA

Cross-Reactivity

Human

Background

Enables G protein-coupled receptor activity. Involved in several processes, including G protein-coupled receptor signaling pathway; positive regulation of Rho protein signal transduction; and response to acidic pH. Located in plasma membrane.

Recommended Dilutions

WB 1:500 - 1:2000

ELISA Recommended starting concentration is 1 µg/mL. Please optimize the concentration based on your specific assay requirements.

Immunogen Information

Gene ID

2828

Swiss Prot

P46093

Immunogen

Recombinant protein (or fragment). This information is considered to be commercially sensitive.

Synonyms

GPR6C.I; GPR4

Contact

 www.abclonal.com

Product Information

Source

Rabbit

Isotype

IgG

Purification

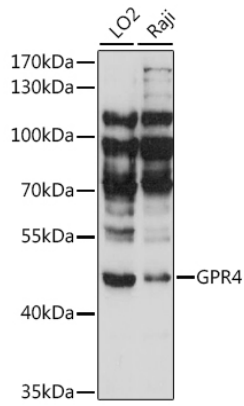
Affinity purification

Storage

Store at -20°C. Avoid freeze / thaw cycles.

Buffer: PBS with 0.01% thimerosal, 50% glycerol, pH7.3.

Validation Data



Western blot analysis of various lysates using GPR4 Rabbit pAb (A15998) at 1:1000 dilution.
Secondary antibody: HRP-conjugated Goat anti-Rabbit IgG (H+L) (AS014) at 1:10000 dilution.
Lysates/proteins: 25 μ g per lane.
Blocking buffer: 3% nonfat dry milk in TBST.
Detection: ECL Basic Kit (RM00020).
Exposure time: 30s.