

A15987

Leader in Biomolecular Solutions for Life Science



MEF2B Rabbit pAb

Catalog No.: A15987

Basic Information

Observed MW

42kDa

Calculated MW

39kDa

Category

Polyclonal Antibody

Applications

WB, ELISA

Cross-Reactivity

Human

Background

The product of this gene is a member of the MADS/MEF2 family of DNA binding proteins. The protein is thought to regulate gene expression, including expression of the smooth muscle myosin heavy chain gene. This region undergoes considerable alternative splicing, with transcripts supporting two non-overlapping loci (GeneID 729991 and 100271849) as well as numerous read-through transcripts that span both loci (annotated as GeneID 4207). Several isoforms of this protein are expressed from either this locus or from some of the read-through transcripts annotated on GeneID 4207.

Recommended Dilutions

WB 1:500 - 1:2000

ELISA Recommended starting concentration is 1 µg/mL. Please optimize the concentration based on your specific assay requirements.

Immunogen Information

Gene ID
100271849

Swiss Prot
Q02080

Immunogen

A synthetic peptide corresponding to a sequence within amino acids 1-100 of human MEF2B (NP_005910.1).

Synonyms

RSRFR2; MEF2B

Contact

 www.abclonal.com

Product Information

Source
Rabbit

Isotype
IgG

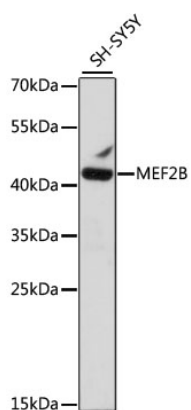
Purification
Affinity purification

Storage

Store at -20°C. Avoid freeze / thaw cycles.

Buffer: PBS with 0.01% thimerosal, 50% glycerol, pH 7.3.

Validation Data



Western blot analysis of lysates from SH-SY5Y cells, using MEF2B Rabbit pAb (A15987) at 1:1000 dilution.

Secondary antibody: HRP-conjugated Goat anti-Rabbit IgG (H+L) (AS014) at 1:10000 dilution.

Lysates/proteins: 25µg per lane.

Blocking buffer: 3% nonfat dry milk in TBST.

Detection: ECL Basic Kit (RM00020).

Exposure time: 3min.