

A15981

Leader in Biomolecular Solutions for Life Science



RFPL4 Rabbit pAb

Catalog No.: A15981

Basic Information

Observed MW

32kDa

Calculated MW

32kDa

Category

Polyclonal Antibody

Applications

WB,ELISA

Cross-Reactivity

Human,Mouse,Rat

Background

Predicted to enable ubiquitin-protein transferase activity. Predicted to be involved in positive regulation of transcription, DNA-templated. Predicted to be located in nucleus. Predicted to be active in chromatin and nucleoplasm.

Recommended Dilutions

WB 1:500 - 1:2000

ELISA Recommended starting concentration is 1 µg/mL. Please optimize the concentration based on your specific assay requirements.

Immunogen Information

Gene ID

342931

Swiss Prot

A6NLU0

Immunogen

A synthetic peptide corresponding to a sequence within amino acids 1-100 of human RFPL4 (NP_001138486.1).

Synonyms

RFPL4; RNF210

Contact



www.abclonal.com

Product Information

Source

Rabbit

Isotype

IgG

Purification

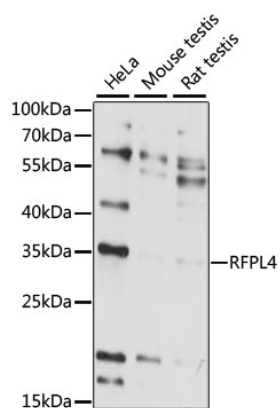
Affinity purification

Storage

Store at -20°C. Avoid freeze / thaw cycles.

Buffer: PBS with 0.01% thimerosal, 50% glycerol, pH7.3.

Validation Data



Western blot analysis of various lysates using RFPL4 Rabbit pAb (A15981) at 1:1000 dilution.

Secondary antibody: HRP-conjugated Goat anti-Rabbit IgG (H+L) (AS014) at 1:10000 dilution.

Lysates/proteins: 25µg per lane.

Blocking buffer: 3% nonfat dry milk in TBST.

Detection: ECL Basic Kit (RM00020).

Exposure time: 15s.