

A15978

Leader in Biomolecular Solutions for Life Science



## RXFP4 Rabbit pAb

Catalog No.: A15978

### Basic Information

---

**Observed MW**

40kDa

**Calculated MW**

41kDa

**Category**

Polyclonal Antibody

**Applications**

WB,ELISA

**Cross-Reactivity**

Human,Mouse

### Background

---

GPR100 is a member of the rhodopsin family of G protein-coupled receptors (GPRs) (Fredriksson et al., 2003 [PubMed 14623098]).

### Recommended Dilutions

---

WB 1:500 - 1:2000

### Immunogen Information

---

**Gene ID**

339403

**Swiss Prot**

Q8TDU9

**Immunogen**

Recombinant fusion protein containing a sequence corresponding to amino acids 305-374 of human RXFP4 (NP\_871001.1).

**Synonyms**

GPR100; RLN3R2; RXFPR4; GPCR142; RXFP4

### Contact

---



[www.abclonal.com](http://www.abclonal.com)

### Product Information

---

**Source**

Rabbit

**Isotype**

IgG

**Purification**

Affinity purification

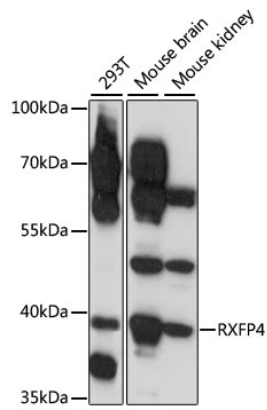
**Storage**

Store at -20°C. Avoid freeze / thaw cycles.

Buffer: PBS with 0.01% thimerosal,50% glycerol,pH7.3.

## Validation Data

---



Western blot analysis of various lysates using RAFP4 Rabbit pAb (A15978) at 1:1000 dilution.  
Secondary antibody: HRP Goat Anti-Rabbit IgG (H+L) (AS014) at 1:10000 dilution.  
Lysates/proteins: 25µg per lane.  
Blocking buffer: 3% nonfat dry milk in TBST.  
Detection: ECL Enhanced Kit (RM00021).  
Exposure time: 1s.