

A15966

Leader in Biomolecular Solutions for Life Science



NSMCE1 Rabbit pAb

Catalog No.: A15966

Basic Information

Observed MW

31kDa

Calculated MW

31kDa

Category

Polyclonal Antibody

Applications

WB,ELISA

Cross-Reactivity

Human,Rat

Background

Enables protein dimerization activity and ubiquitin protein ligase activity. Involved in positive regulation of response to DNA damage stimulus. Located in nucleoplasm. Part of Smc5-Smc6 complex.

Recommended Dilutions

WB 1:500 - 1:2000

ELISA Recommended starting concentration is 1 µg/mL. Please optimize the concentration based on your specific assay requirements.

Immunogen Information

Gene ID

197370

Swiss Prot

Q8WV22

Immunogen

Recombinant protein (or fragment). This information is considered to be commercially sensitive.

Synonyms

NSE1; NSMCE1

Contact



www.abclonal.com

Product Information

Source

Rabbit

Isotype

IgG

Purification

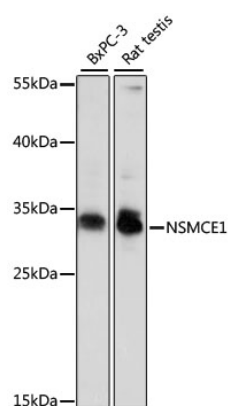
Affinity purification

Storage

Store at -20°C. Avoid freeze / thaw cycles.

Buffer: PBS with 0.01% thimerosal, 50% glycerol, pH7.3.

Validation Data



Western blot analysis of various lysates using NSMCE1 Rabbit pAb (A15966) at 1000 dilution.

Secondary antibody: HRP-conjugated Goat anti-Rabbit IgG (H+L) (AS014) at 1:10000 dilution.

Lysates/proteins: 25µg per lane.

Blocking buffer: 3% nonfat dry milk in TBST.

Detection: ECL Basic Kit (RM00020).

Exposure time: 10s.