

A15902

Leader in Biomolecular Solutions for Life Science



# PLA2G12A Rabbit pAb

Catalog No.: A15902

## Basic Information

### Observed MW

17kDa

### Calculated MW

19kDa

### Category

Polyclonal Antibody

### Applications

WB,ELISA

### Cross-Reactivity

Human,Mouse

## Background

Secreted phospholipase A2 (sPLA2) enzymes liberate arachidonic acid from phospholipids for production of eicosanoids and exert a variety of physiologic and pathologic effects. Group XII sPLA2s, such as PLA2G12A, have relatively low specific activity and are structurally and functionally distinct from other sPLA2s (Gelb et al., 2000 [PubMed 11031251]).

## Recommended Dilutions

**WB** 1:500 - 1:2000

**ELISA** Recommended starting concentration is 1 µg/mL. Please optimize the concentration based on your specific assay requirements.

## Immunogen Information

**Gene ID**  
81579

**Swiss Prot**  
Q9BZM1

### Immunogen

Synthetic peptide. This information is considered to be commercially sensitive.

### Synonyms

GXII; ROSSY; PLA2G12; PLA2G12A

## Contact

 [www.abclonal.com](http://www.abclonal.com)

## Product Information

**Source**  
Rabbit

**Isotype**  
IgG

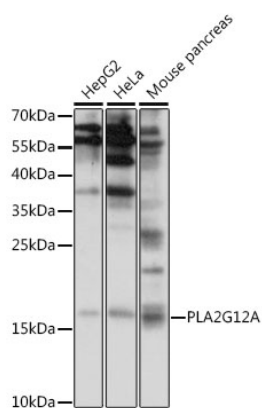
**Purification**  
Affinity purification

### Storage

Store at -20°C. Avoid freeze / thaw cycles.

Buffer: PBS with 0.01% thimerosal, 50% glycerol, pH7.3.

## Validation Data



Western blot analysis of various lysates using PLA2G12A Rabbit pAb (A15902) at 1:1000 dilution.

Secondary antibody: HRP-conjugated Goat anti-Rabbit IgG (H+L) (AS014) at 1:10000 dilution.

Lysates/proteins: 25µg per lane.

Blocking buffer: 3% nonfat dry milk in TBST.

Detection: ECL Basic Kit (RM00020).

Exposure time: 150s.