

A15823

Leader in Biomolecular Solutions for Life Science



BZW2 Rabbit pAb

Catalog No.: A15823

Basic Information

Observed MW

48kDa

Calculated MW

48kDa

Category

Polyclonal Antibody

Applications

WB,IF/ICC,ELISA

Cross-Reactivity

Human,Mouse

Background

Enables cadherin binding activity. Predicted to be involved in cell differentiation and nervous system development. Located in cytoplasm.

Recommended Dilutions

WB 1:500 - 1:2000

IF/ICC 1:50 - 1:200

ELISA Recommended starting concentration is 1 µg/mL. Please optimize the concentration based on your specific assay requirements.

Immunogen Information

Gene ID

28969

Swiss Prot

Q9Y6E2

Immunogen

Recombinant fusion protein containing a sequence corresponding to amino acids 190-300 of human BZW2 (NP_054757.1).

Synonyms

5MP1; MST017; HSPC028; MSTP017; BZW2

Contact



www.abclonal.com

Product Information

Source

Rabbit

Isotype

IgG

Purification

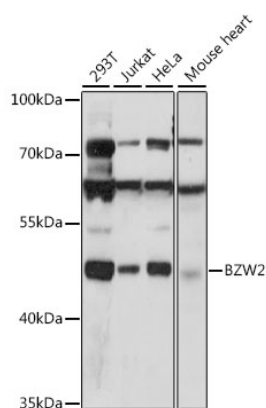
Affinity purification

Storage

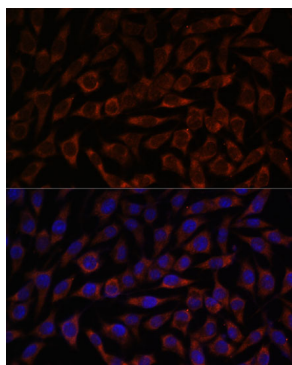
Store at -20°C. Avoid freeze / thaw cycles.

Buffer: PBS with 0.09% Sodium azide,50% glycerol,pH7.3.

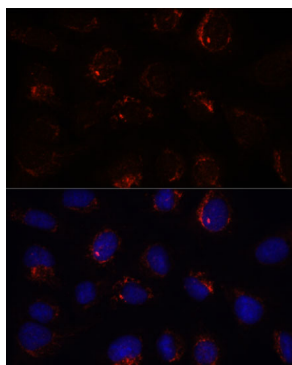
Validation Data



Western blot analysis of various lysates using BZW2 Rabbit pAb (A15823) at 1:1000 dilution.
Secondary antibody: HRP-conjugated Goat anti-Rabbit IgG (H+L) (AS014) at 1:10000 dilution.
Lysates/proteins: 25µg per lane.
Blocking buffer: 3% nonfat dry milk in TBST.
Detection: ECL Basic Kit (RM00020).
Exposure time: 90s.



Immunofluorescence analysis of L929 cells using BZW2 Rabbit pAb (A15823) at dilution of 1:100. Secondary antibody: Cy3-conjugated Goat anti-Rabbit IgG (H+L) (AS007) at 1:500 dilution. Blue: DAPI for nuclear staining.



Immunofluorescence analysis of U-2 OS cells using BZW2 Rabbit pAb (A15823) at dilution of 1:100. Secondary antibody: Cy3-conjugated Goat anti-Rabbit IgG (H+L) (AS007) at 1:500 dilution. Blue: DAPI for nuclear staining.