

A15820

Leader in Biomolecular Solutions for Life Science



www.abclonal.com

MMADHC Rabbit pAb

Catalog No.: A15820

Basic Information

Observed MW

33kDa

Calculated MW

33kDa

Category

Polyclonal Antibody

Applications

WB,ELISA

Cross-Reactivity

Human,Mouse,Rat

Background

This gene encodes a mitochondrial protein that is involved in an early step of vitamin B12 metabolism. Vitamin B12 (cobalamin) is essential for normal development and survival in humans. Mutations in this gene cause methylmalonic aciduria and homocystinuria type cblD (MMADHC), a disorder of cobalamin metabolism that is characterized by decreased levels of the coenzymes adenosylcobalamin and methylcobalamin. Pseudogenes have been identified on chromosomes 11 and X.

Recommended Dilutions

WB 1:500 - 1:2000

ELISA Recommended starting concentration is 1 µg/mL. Please optimize the concentration based on your specific assay requirements.

Immunogen Information

Gene ID

27249

Swiss Prot

Q9H3L0

Immunogen

Recombinant protein (or fragment). This information is considered to be commercially sensitive.

Synonyms

cblD; C2orf25; CL25022; MMADHC

Contact

 www.abclonal.com

Product Information

Source

Rabbit

Isotype

IgG

Purification

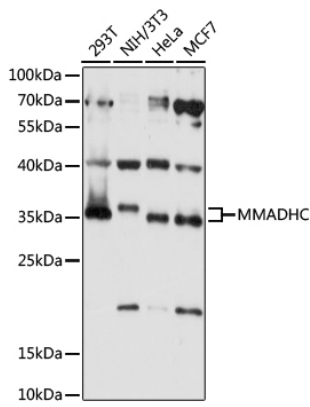
Affinity purification

Storage

Store at -20°C. Avoid freeze / thaw cycles.

Buffer: PBS with 0.01% thimerosal, 50% glycerol, pH7.3.

Validation Data



Western blot analysis of various lysates using MMADHC Rabbit pAb (A15820) at 1:1000 dilution.

Secondary antibody: HRP-conjugated Goat anti-Rabbit IgG (H+L) (AS014) at 1:10000 dilution.

Lysates/proteins: 25µg per lane.

Blocking buffer: 3% nonfat dry milk in TBST.

Detection: ECL Basic Kit (RM00020).

Exposure time: 10s.