

A1582

Leader in Biomolecular Solutions for Life Science



# TRβ1/THRB Rabbit pAb

Catalog No.: A1582

2 Publications

## Basic Information

### Observed MW

53kDa

### Calculated MW

53kDa

### Category

Polyclonal Antibody

### Applications

WB,ELISA

### Cross-Reactivity

Human,Mouse,Rat

## Background

The protein encoded by this gene is a nuclear hormone receptor for triiodothyronine. It is one of the several receptors for thyroid hormone, and has been shown to mediate the biological activities of thyroid hormone. Knockout studies in mice suggest that the different receptors, while having certain extent of redundancy, may mediate different functions of thyroid hormone. Mutations in this gene are known to be a cause of generalized thyroid hormone resistance (GTHR), a syndrome characterized by goiter and high levels of circulating thyroid hormone (T3-T4), with normal or slightly elevated thyroid stimulating hormone (TSH). Several alternatively spliced transcript variants encoding the same protein have been observed for this gene.

## Recommended Dilutions

**WB** 1:2000 - 1:5000

**ELISA** Recommended starting concentration is 1 µg/mL. Please optimize the concentration based on your specific assay requirements.

## Immunogen Information

### Gene ID

7068

### Swiss Prot

P10828

### Immunogen

Recombinant fusion protein containing a sequence corresponding to amino acids 1-263 of human TRβ1/THRB (NP\_000452.2).

### Synonyms

TRb; GRTH; PRTH; THR1; ERBA2; NR1A2; THRB1; THRB2; TRbeta; THRbeta; TRbeta1; C-ERBA-2; THRbeta1; Thrbeta2; C-ERBA-BETA; TRβ1/THRB

## Contact



[www.abclonal.com](http://www.abclonal.com)

## Product Information

### Source

Rabbit

### Isotype

IgG

### Purification

Affinity purification

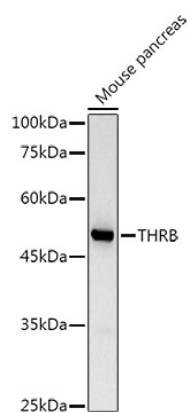
### Storage

Store at -20°C. Avoid freeze / thaw cycles.

Buffer: PBS with 0.05% proclin300,50% glycerol,pH7.3.

## Validation Data

---



Western blot analysis of lysates from Mouse pancreas, using TRβ1/THRβ Rabbit pAb (A1582) at 1:1000 dilution.

Secondary antibody: HRP-conjugated Goat anti-Rabbit IgG (H+L) (AS014) at 1:10000 dilution.

Lysates/proteins: 25μg per lane.

Blocking buffer: 3% nonfat dry milk in TBST.

Detection: ECL Basic Kit (RM00020).

Exposure time: 30s.