

A15801

Leader in Biomolecular Solutions for Life Science



www.abclonal.com

SF3B1 Rabbit pAb

Catalog No.: A15801

1 Publications

Basic Information

Observed MW

150kDa

Calculated MW

146kDa

Category

Polyclonal Antibody

Applications

WB,IF/ICC,ELISA

Cross-Reactivity

Human,Mouse,Rat

Background

This gene encodes subunit 1 of the splicing factor 3b protein complex. Splicing factor 3b, together with splicing factor 3a and a 12S RNA unit, forms the U2 small nuclear ribonucleoproteins complex (U2 snRNP). The splicing factor 3b/3a complex binds pre-mRNA upstream of the intron's branch site in a sequence independent manner and may anchor the U2 snRNP to the pre-mRNA. Splicing factor 3b is also a component of the minor U12-type spliceosome. The carboxy-terminal two-thirds of subunit 1 have 22 non-identical, tandem HEAT repeats that form rod-like, helical structures. Alternative splicing results in multiple transcript variants encoding different isoforms.

Recommended Dilutions

WB 1:500 - 1:2000

IF/ICC 1:50 - 1:200

ELISA Recommended starting concentration is 1 µg/mL. Please optimize the concentration based on your specific assay requirements.

Immunogen Information

Gene ID

23451

Swiss Prot

O75533

Immunogen

Recombinant fusion protein containing a sequence corresponding to amino acids 1-144 of human SF3B1 (NP_001005526.1).

Synonyms

MDS; PRP10; Hsh155; PRPF10; SAP155; SF3b155; SF3B1

Contact



www.abclonal.com

Product Information

Source

Rabbit

Isotype

IgG

Purification

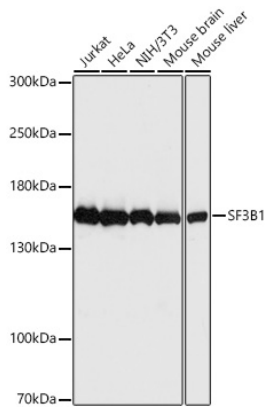
Affinity purification

Storage

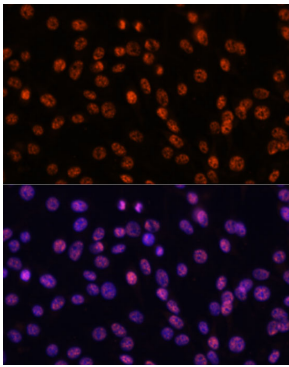
Store at -20°C. Avoid freeze / thaw cycles.

Buffer: PBS with 0.01% thimerosal, 50% glycerol, pH7.3.

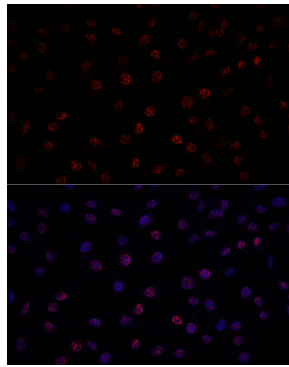
Validation Data



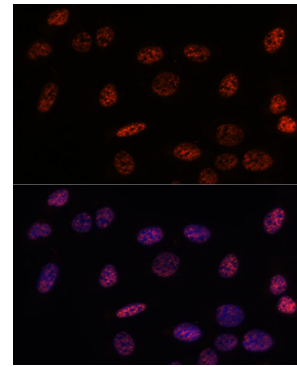
Western blot analysis of various lysates using SF3B1 Rabbit pAb (A15801) at 1:1000 dilution incubated overnight at 4°C.
Secondary antibody: HRP-conjugated Goat anti-Rabbit IgG (H+L) (AS014) at 1:10000 dilution.
Lysates/proteins: 25 µg per lane.
Blocking buffer: 3% nonfat dry milk in TBST.
Detection: ECL Basic Kit (RM00020).
Exposure time: 30s.



Immunofluorescence analysis of C6 using SF3B1 Rabbit pAb (A15801) at dilution of d100 (40x lens). Blue: DAPI for nuclear staining.



Immunofluorescence analysis of L929 using SF3B1 Rabbit pAb (A15801) at dilution of d100 (40x lens). Blue: DAPI for nuclear staining.



Immunofluorescence analysis of U-2OS using SF3B1 Rabbit pAb (A15801) at dilution of d100 (40x lens). Blue: DAPI for nuclear staining.