

A15790

Leader in Biomolecular Solutions for Life Science



GPR45 Rabbit pAb

Catalog No.: A15790

Basic Information

Observed MW

45kDa

Calculated MW

42kDa

Category

Polyclonal Antibody

Applications

WB,ELISA

Cross-Reactivity

Human

Background

This intronless gene encodes a member of the G protein-coupled receptor (GPCR) family. Members of this protein family contain seven putative transmembrane domains and may mediate signaling processes to the interior of the cell via activation of heterotrimeric G proteins. This protein may function in the central nervous system.

Recommended Dilutions

WB 1:500 - 1:2000

Immunogen Information

Gene ID

11250

Swiss Prot

Q9Y5Y3

Immunogen

A synthetic peptide corresponding to a sequence within amino acids 150-250 of human GPR45 (NP_009158.3).

Synonyms

PSP24; PSP24A; PSP24(ALPHA); GPR45

Contact

 www.abclonal.com

Product Information

Source

Rabbit

Isotype

IgG

Purification

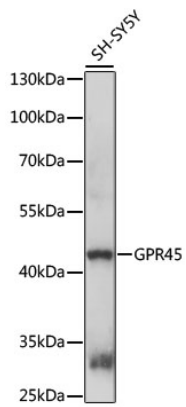
Affinity purification

Storage

Store at -20°C. Avoid freeze / thaw cycles.

Buffer: PBS with 0.01% thimerosal, 50% glycerol, pH7.3.

Validation Data



Western blot analysis of lysates from SH-SY5Y cells, using GPR45 Rabbit pAb (A15790) at 1:1000 dilution.

Secondary antibody: HRP Goat Anti-Rabbit IgG (H+L) (AS014) at 1:10000 dilution.

Lysates/proteins: 25µg per lane.

Blocking buffer: 3% nonfat dry milk in TBST.

Detection: ECL Basic Kit (RM00020).

Exposure time: 5s.