

A15710

Leader in Biomolecular Solutions for Life Science



# PRPSAP1 Rabbit pAb

Catalog No.: A15710

## Basic Information

---

### Observed MW

42kDa

### Calculated MW

39kDa

### Category

Polyclonal Antibody

### Applications

WB,ELISA

### Cross-Reactivity

Human,Mouse

## Background

---

Enables identical protein binding activity. Predicted to be involved in 5-phosphoribose 1-diphosphate biosynthetic process and purine nucleotide biosynthetic process. Predicted to be part of ribose phosphate diphosphokinase complex. Predicted to be active in cytoplasm.

## Recommended Dilutions

---

**WB** 1:500 - 1:2000

**ELISA** Recommended starting concentration is 1 µg/mL. Please optimize the concentration based on your specific assay requirements.

## Immunogen Information

---

### Gene ID

5635

### Swiss Prot

Q14558

### Immunogen

Recombinant protein (or fragment). This information is considered to be commercially sensitive.

### Synonyms

PAP39; PRPSAP1

## Contact

---

 [www.abclonal.com](http://www.abclonal.com)

## Product Information

---

### Source

Rabbit

### Isotype

IgG

### Purification

Affinity purification

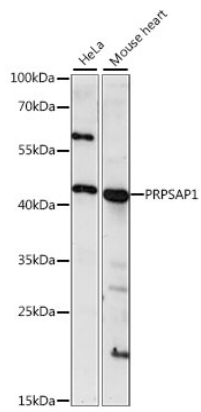
### Storage

Store at -20°C. Avoid freeze / thaw cycles.

Buffer: PBS with 0.01% thimerosal, 50% glycerol, pH7.3.

## Validation Data

---



Western blot analysis of various lysates using PRPSAP1 Rabbit pAb (A15710) at 1:1000 dilution.

Secondary antibody: HRP-conjugated Goat anti-Rabbit IgG (H+L) (AS014) at 1:10000 dilution.

Lysates/proteins: 25µg per lane.

Blocking buffer: 3% nonfat dry milk in TBST.

Detection: ECL Basic Kit (RM00020).

Exposure time: 30s.