

A15591

Leader in Biomolecular Solutions for Life Science



LC3A / LC3B Rabbit pAb

Catalog No.: A15591 **5 Publications**

Basic Information

Observed MW

14kDa, 16kDa/14kDa/16kDa

Calculated MW

14kDa

Category

Polyclonal Antibody

Applications

WB,IHC-P,ELISA

Cross-Reactivity

Human,Mouse

Background

The product of this gene is a subunit of neuronal microtubule-associated MAP1A and MAP1B proteins, which are involved in microtubule assembly and important for neurogenesis. Studies on the rat homolog implicate a role for this gene in autophagy, a process that involves the bulk degradation of cytoplasmic component.

Recommended Dilutions

WB 1:500 - 1:1000

IHC-P 1:50 - 1:200

ELISA Recommended starting concentration is 1 µg/mL. Please optimize the concentration based on your specific assay requirements.

Immunogen Information

Gene ID
84557/81631

Swiss Prot
Q9GZQ8/Q9H492

Immunogen

Recombinant protein (or fragment). This information is considered to be commercially sensitive.

Synonyms

MAP1LC3B; ATG8F; LC3B; MAP1A/1BLC3; MAP1LC3B-a; MAP1LC3A; ATG8E; LC3; LC3A; MAP1ALC3; MAP1BLC3; LC3A/LC3B; LC3A / LC3B

Contact

 www.abclonal.com

Product Information

Source
Rabbit

Isotype
IgG

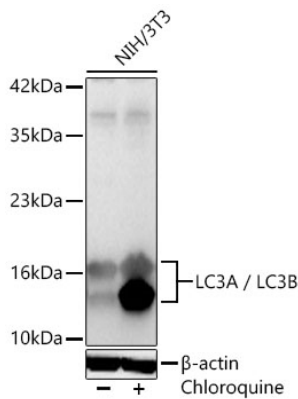
Purification
Affinity purification

Storage

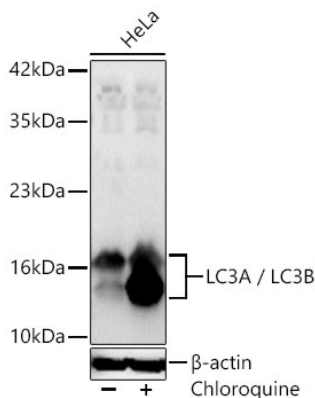
Store at -20°C. Avoid freeze / thaw cycles.

Buffer: PBS with 0.09% Sodium azide, 50% glycerol, pH7.3.

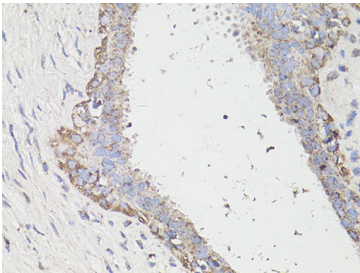
Validation Data



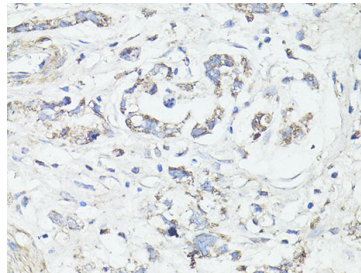
Western blot analysis of lysates from NIH/3T3 cells using LC3A / LC3B Rabbit pAb (A15591) at 1:1000 dilution incubated at room temperature for 1.5 hours. NIH/3T3 cells were treated by Chloroquine (50 μ M) at 37°C for 20 hours.
Secondary antibody: HRP-conjugated Goat anti-Rabbit IgG (H+L) (AS014) at 1:10000 dilution.
Lysates/proteins: 30 μ g per lane.
Blocking buffer: 3 % nonfat dry milk in TBST.
Detection: ECL Basic Kit (RM00020).
Exposure time: 60s.



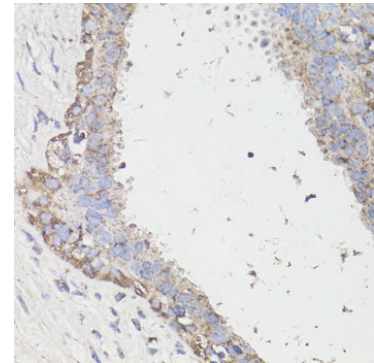
Western blot analysis of lysates from HeLa cells using LC3A / LC3B Rabbit pAb (A15591) at 1:1000 dilution incubated at room temperature for 1.5 hours. HeLa cells were treated by Chloroquine (50 μ M) at 37°C for 20 hours.
Secondary antibody: HRP-conjugated Goat anti-Rabbit IgG (H+L) (AS014) at 1:10000 dilution.
Lysates/proteins: 30 μ g per lane.
Blocking buffer: 3 % nonfat dry milk in TBST.
Detection: ECL Basic Kit (RM00020).
Exposure time: 60s.



Immunohistochemistry analysis of paraffin-embedded Human breast cancer using LC3A / LC3B Rabbit pAb (A15591) at dilution of 1:100 (40x lens). Microwave antigen retrieval performed with 0.01M PBS Buffer (pH 7.2) prior to IHC staining.



Immunohistochemistry analysis of paraffin-embedded Human gastric cancer using LC3A / LC3B Rabbit pAb (A15591) at dilution of 1:100 (40x lens). Microwave antigen retrieval performed with 0.01M PBS Buffer (pH 7.2) prior to IHC staining.



Immunohistochemistry analysis of paraffin-embedded Human mammary cancer using LC3A / LC3B Rabbit pAb (A15591) at dilution of 1:100 (40x lens). Microwave antigen retrieval performed with 0.01M PBS Buffer (pH 7.2) prior to IHC staining.