

A15545

Leader in Biomolecular Solutions for Life Science



TPD52L3 Rabbit pAb

Catalog No.: A15545

Basic Information

Observed MW

14kDa

Calculated MW

16kDa

Category

Polyclonal Antibody

Applications

WB,ELISA,IF-P

Cross-Reactivity

Mouse,Rat

Background

This gene encodes a member of the tumor protein D52-like family of proteins. These proteins are characterized by an N-terminal coiled-coil motif that is used to form homo- and heteromeric complexes with other tumor protein D52-like proteins. The encoded protein may play a role in spermatogenesis. Alternative splicing results in multiple transcript variants.

Recommended Dilutions

WB 1:200 - 1:2000

IF-P 1:50 - 1:200

ELISA Recommended starting concentration is 1 µg/mL. Please optimize the concentration based on your specific assay requirements.

Immunogen Information

Gene ID
89882

Swiss Prot
Q96J77

Immunogen

Recombinant protein (or fragment). This information is considered to be commercially sensitive.

Synonyms

D55; hD55; TPD55; NYDSP25; TPD52L3

Contact

 www.abclonal.com

Product Information

Source
Rabbit

Isotype
IgG

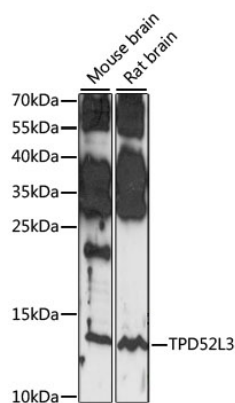
Purification
Affinity purification

Storage

Store at -20°C. Avoid freeze / thaw cycles.

Buffer: PBS with 0.01% thimerosal, 50% glycerol, pH7.3.

Validation Data



Western blot analysis of various lysates using TPD52L3 Rabbit pAb (A15545) at 1:1000 dilution.

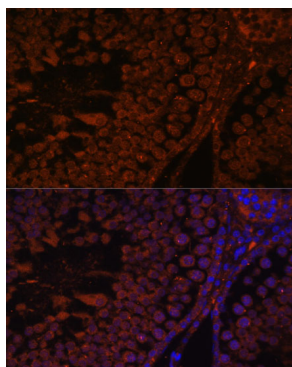
Secondary antibody: HRP-conjugated Goat anti-Rabbit IgG (H+L) (AS014) at 1:10000 dilution.

Lysates/proteins: 25µg per lane.

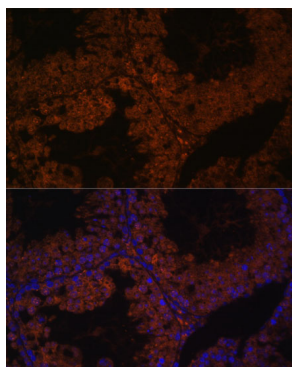
Blocking buffer: 3% nonfat dry milk in TBST.

Detection: ECL Basic Kit (RM00020).

Exposure time: 30S.



Immunofluorescence analysis of paraffin-embedded rat testis using TPD52L3 Rabbit pAb (A15545) at dilution of 1:100. Secondary antibody: Cy3-conjugated Goat anti-Rabbit IgG (H+L) (AS007) at 1:500 dilution. Blue: DAPI for nuclear staining.



Immunofluorescence analysis of paraffin-embedded mouse testis using TPD52L3 Rabbit pAb (A15545) at dilution of 1:100. Secondary antibody: Cy3-conjugated Goat anti-Rabbit IgG (H+L) (AS007) at 1:500 dilution. Blue: DAPI for nuclear staining.