

A15542

Leader in Biomolecular Solutions for Life Science



## DIXDC1 Rabbit pAb

Catalog No.: A15542

### Basic Information

#### Observed MW

70kDa

#### Calculated MW

77kDa

#### Category

Polyclonal Antibody

#### Applications

WB, ELISA

#### Cross-Reactivity

Human

### Background

The protein encoded by this gene is a positive regulator of the Wnt signaling pathway. The encoded protein is found associated with gamma tubulin at the centrosome. Alternative splicing results in multiple transcript variants encoding different isoforms.

### Recommended Dilutions

**WB** 1:200 - 1:2000

**ELISA** Recommended starting concentration is 1 µg/mL. Please optimize the concentration based on your specific assay requirements.

### Immunogen Information

#### Gene ID

85458

#### Swiss Prot

Q155Q3

#### Immunogen

Recombinant fusion protein containing a sequence corresponding to amino acids 173-472 of human DIXDC1 (NP\_219493.1).

#### Synonyms

CCD1; DIXDC1

### Contact

 [www.abclonal.com](http://www.abclonal.com)

### Product Information

#### Source

Rabbit

#### Isotype

IgG

#### Purification

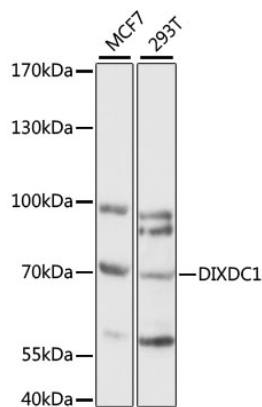
Affinity purification

#### Storage

Store at -20°C. Avoid freeze / thaw cycles.

Buffer: PBS with 0.01% thimerosal, 50% glycerol, pH7.3.

## Validation Data



Western blot analysis of various lysates using DIXDC1 Rabbit pAb (A15542) at 1:1000 dilution.  
Secondary antibody: HRP-conjugated Goat anti-Rabbit IgG (H+L) (AS014) at 1:10000 dilution.  
Lysates/proteins: 25µg per lane.  
Blocking buffer: 3% nonfat dry milk in TBST.  
Detection: ECL Basic Kit (RM00020).  
Exposure time: 60S.