

A1554

Leader in Biomolecular Solutions for Life Science



MCT4/SLC16A3 Rabbit pAb

Catalog No.: A1554

Basic Information

Observed MW

50kDa

Calculated MW

49kDa

Category

Polyclonal Antibody

Applications

WB

Cross-Reactivity

Human

Background

Lactic acid and pyruvate transport across plasma membranes is catalyzed by members of the proton-linked monocarboxylate transporter (MCT) family, which has been designated solute carrier family-16. Each MCT appears to have slightly different substrate and inhibitor specificities and transport kinetics, which are related to the metabolic requirements of the tissues in which it is found. The MCTs, which include MCT1 (SLC16A1; MIM 600682) and MCT2 (SLC16A7; MIM 603654), are characterized by 12 predicted transmembrane domains (Price et al., 1998 [PubMed 9425115]).

Recommended Dilutions

WB 1:200 - 1:500

Immunogen Information

Gene ID

9123

Swiss Prot

O15427

Immunogen

Synthetic peptide. This information is considered to be commercially sensitive.

Synonyms

MCT3; MCT4; MCT 3; MCT 4; MCT-3; MCT-4; MCT4/SLC16A3

Contact

 www.abclonal.com

Product Information

Source

Rabbit

Isotype

IgG

Purification

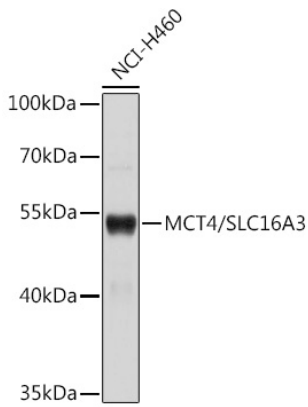
Affinity purification

Storage

Store at 4°C. Avoid freeze / thaw cycles.

Buffer: PBS with 0.02% sodium azide, pH7.3.

Validation Data



Western blot analysis of lysates from NCI-H460 cells, using MCT4/SLC16A3 Rabbit pAb (A1554).

Secondary antibody: HRP-conjugated Goat anti-Rabbit IgG (H+L) (AS014) at 1:10000 dilution.

Lysates/proteins: 25µg per lane.

Blocking buffer: 3% nonfat dry milk in TBST.