

A15535

Leader in Biomolecular Solutions for Life Science



MIEN1 Rabbit pAb

Catalog No.: A15535

Basic Information

Observed MW

15kDa

Calculated MW

12kDa

Category

Polyclonal Antibody

Applications

WB,ELISA

Cross-Reactivity

Human

Background

Involved in negative regulation of apoptotic process; positive regulation of cell migration; and positive regulation of filopodium assembly. Located in several cellular components, including centriolar satellite; cytosol; and nucleoplasm. Is intrinsic component of the cytoplasmic side of the plasma membrane.

Recommended Dilutions

WB 1:200 - 1:2000

ELISA Recommended starting concentration is 1 µg/mL. Please optimize the concentration based on your specific assay requirements.

Immunogen Information

Gene ID

84299

Swiss Prot

Q9BRT3

Immunogen

Recombinant fusion protein containing a sequence corresponding to amino acids 1-115 of human MIEN1 (NP_115715.3).

Synonyms

C35; ORB3; XTP4; RDX12; C17orf37; MIEN1

Contact



www.abclonal.com

Product Information

Source

Rabbit

Isotype

IgG

Purification

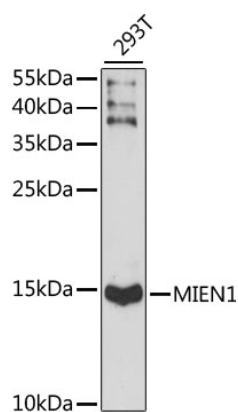
Affinity purification

Storage

Store at -20°C. Avoid freeze / thaw cycles.

Buffer: PBS with 0.01% thimerosal, 50% glycerol, pH7.3.

Validation Data



Western blot analysis of lysates from 293T cells, using MIEN1 Rabbit pAb (A15535) at 1:1000 dilution.

Secondary antibody: HRP-conjugated Goat anti-Rabbit IgG (H+L) (AS014) at 1:10000 dilution.

Lysates/proteins: 25µg per lane.

Blocking buffer: 3% nonfat dry milk in TBST.

Detection: ECL Basic Kit (RM00020).

Exposure time: 90s.