

A15534

Leader in Biomolecular Solutions for Life Science



## LLPH Rabbit pAb

Catalog No.: A15534

### Basic Information

#### Observed MW

24kDa

#### Calculated MW

15kDa

#### Category

Polyclonal Antibody

#### Applications

WB,IF/ICC,ELISA

#### Cross-Reactivity

Human,Rat

### Background

Enables RNA binding activity. Predicted to be involved in dendrite extension and positive regulation of dendritic spine development. Located in chromosome and nucleolus.

### Recommended Dilutions

**WB** 1:200 - 1:2000

**IF/ICC** 1:50 - 1:200

**ELISA** Recommended starting concentration is 1 µg/mL. Please optimize the concentration based on your specific assay requirements.

### Immunogen Information

#### Gene ID

84298

#### Swiss Prot

Q9BRT6

#### Immunogen

Recombinant protein (or fragment). This information is considered to be commercially sensitive.

#### Synonyms

hLLP; C12orf31; LLPH

### Contact



[www.abclonal.com](http://www.abclonal.com)

### Product Information

#### Source

Rabbit

#### Isotype

IgG

#### Purification

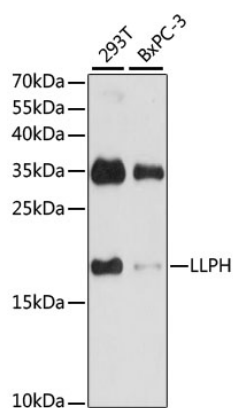
Affinity purification

#### Storage

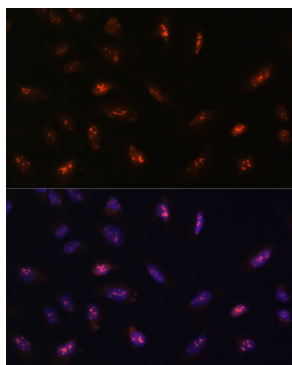
Store at -20°C. Avoid freeze / thaw cycles.

Buffer: PBS with 0.01% thimerosal, 50% glycerol, pH7.3.

## Validation Data



Western blot analysis of various lysates using LLPH Rabbit pAb (A15534) at 1:1000 dilution.  
Secondary antibody: HRP-conjugated Goat anti-Rabbit IgG (H+L) (AS014) at 1:10000 dilution.  
Lysates/proteins: 25µg per lane.  
Blocking buffer: 3% nonfat dry milk in TBST.  
Detection: ECL Basic Kit (RM00020).  
Exposure time: 30s.



Immunofluorescence analysis of U-2 OS cells using LLPH Rabbit pAb (A15534) at dilution of 1:100.  
Secondary antibody: Cy3-conjugated Goat anti-Rabbit IgG (H+L) (AS007) at 1:500 dilution. Blue: DAPI for nuclear staining.