

A15525

Leader in Biomolecular Solutions for Life Science



RTBDN Rabbit pAb

Catalog No.: A15525

Basic Information

Observed MW

25kDa

Calculated MW

25kDa

Category

Polyclonal Antibody

Applications

WB,ELISA

Cross-Reactivity

Rat

Background

This gene was first identified in a study of human eye tissues. The protein encoded by this gene is preferentially expressed in the retina and may play a role in binding retinoids and other carotenoids as it shares homology with riboflavin binding proteins. Alternative splicing results in multiple transcript variants and protein isoforms.

Recommended Dilutions

WB 1:200 - 1:2000

ELISA Recommended starting concentration is 1 µg/mL. Please optimize the concentration based on your specific assay requirements.

Immunogen Information

Gene ID

83546

Swiss Prot

Q9BSG5

Immunogen

Recombinant protein (or fragment). This information is considered to be commercially sensitive.

Synonyms

RTBDN; retbindin

Contact

 www.abclonal.com

Product Information

Source

Rabbit

Isotype

IgG

Purification

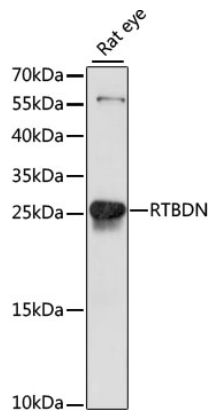
Affinity purification

Storage

Store at -20°C. Avoid freeze / thaw cycles.

Buffer: PBS with 0.01% thimerosal, 50% glycerol, pH7.3.

Validation Data



Western blot analysis of lysates from rat eye, using RTBDN Rabbit pAb (A15525) at 1:1000 dilution.
Secondary antibody: HRP-conjugated Goat anti-Rabbit IgG (H+L) (AS014) at 1:10000 dilution.
Lysates/proteins: 25µg per lane.
Blocking buffer: 3% nonfat dry milk in TBST.
Detection: ECL Basic Kit (RM00020).
Exposure time: 10s.