

A15508

Leader in Biomolecular Solutions for Life Science



MIS12 Rabbit pAb

Catalog No.: A15508

Basic Information

Observed MW

24kDa

Calculated MW

24kDa

Category

Polyclonal Antibody

Applications

WB,ELISA

Cross-Reactivity

Human

Background

Involved in attachment of mitotic spindle microtubules to kinetochore and kinetochore assembly. Located in kinetochore and nucleus. Part of MIS12/MIND type complex.

Recommended Dilutions

WB 1:200 - 1:2000

ELISA Recommended starting concentration is 1 µg/mL. Please optimize the concentration based on your specific assay requirements.

Immunogen Information

Gene ID

79003

Swiss Prot

Q9H081

Immunogen

Recombinant protein (or fragment). This information is considered to be commercially sensitive.

Synonyms

MTW1; hMis12; KNTC2AP; 2510025F08Rik; MIS12

Contact

 www.abclonal.com

Product Information

Source

Rabbit

Isotype

IgG

Purification

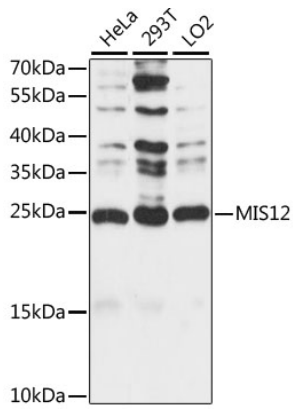
Affinity purification

Storage

Store at -20°C. Avoid freeze / thaw cycles.

Buffer: PBS with 0.01% thimerosal, 50% glycerol, pH7.3.

Validation Data



Western blot analysis of various lysates using MIS12 Rabbit pAb (A15508) at 1:1000 dilution.
Secondary antibody: HRP-conjugated Goat anti-Rabbit IgG (H+L) (AS014) at 1:10000 dilution.
Lysates/proteins: 25µg per lane.
Blocking buffer: 3% nonfat dry milk in TBST.
Detection: ECL Basic Kit (RM00020).
Exposure time: 30s.