

A15485

Leader in Biomolecular Solutions for Life Science



# RAB22A Rabbit pAb

Catalog No.: A15485

## Basic Information

---

### Observed MW

22kDa

### Calculated MW

22kDa

### Category

Polyclonal Antibody

### Applications

WB,ELISA

### Cross-Reactivity

Mouse

## Background

---

The protein encoded by this gene is a member of the RAB family of small GTPases. The GTP-bound form of the encoded protein has been shown to interact with early-endosomal antigen 1, and may be involved in the trafficking of and interaction between endosomal compartments.

## Recommended Dilutions

---

**WB** 1:200 - 1:2000

**ELISA** Recommended starting concentration is 1 µg/mL. Please optimize the concentration based on your specific assay requirements.

## Immunogen Information

---

**Gene ID**  
57403

**Swiss Prot**  
Q9UL26

### Immunogen

Synthetic peptide. This information is considered to be commercially sensitive.

### Synonyms

RAB22A

## Contact

---

 [www.abclonal.com](http://www.abclonal.com)

## Product Information

---

**Source**  
Rabbit

**Isotype**  
IgG

**Purification**  
Affinity purification

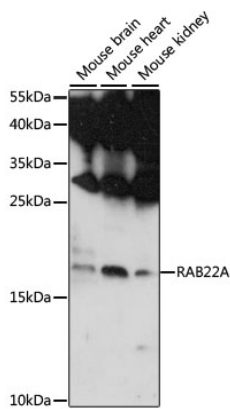
### Storage

Store at -20°C. Avoid freeze / thaw cycles.

Buffer: PBS with 0.01% thimerosal, 50% glycerol, pH7.3.

## Validation Data

---



Western blot analysis of various lysates using RAB22A Rabbit pAb (A15485) at 1:1000 dilution.

Secondary antibody: HRP-conjugated Goat anti-Rabbit IgG (H+L) (AS014) at 1:10000 dilution.

Lysates/proteins: 25µg per lane.

Blocking buffer: 3% nonfat dry milk in TBST.

Detection: ECL Basic Kit (RM00020).

Exposure time: 90s.