

A15473

Leader in Biomolecular Solutions for Life Science



SMPD4 Rabbit pAb

Catalog No.: A15473

Basic Information

Observed MW

100kDa

Calculated MW

98kDa

Category

Polyclonal Antibody

Applications

WB,IF/ICC,ELISA

Cross-Reactivity

Human,Mouse

Background

The protein encoded by this gene is a sphingomyelinase that catalyzes the hydrolysis of membrane sphingomyelin to form phosphorylcholine and ceramide. This gene is activated by DNA damage, cellular stress, and tumor necrosis factor, but it is downregulated by wild-type p53. The encoded protein localizes to the endoplasmic reticulum and Golgi network.

Recommended Dilutions

WB 1:200 - 1:2000

IF/ICC 1:50 - 1:200

ELISA Recommended starting concentration is 1 µg/mL. Please optimize the concentration based on your specific assay requirements.

Immunogen Information

Gene ID

55627

Swiss Prot

Q9NXE4

Immunogen

Recombinant protein (or fragment). This information is considered to be commercially sensitive.

Synonyms

SKNY; NET13; NEDMABA; NEDMEBA; NSMASE3; NSMASE-3; SMPD4

Contact



www.abclonal.com

Product Information

Source

Rabbit

Isotype

IgG

Purification

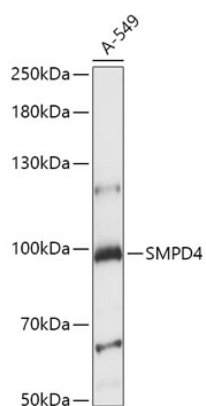
Affinity purification

Storage

Store at -20°C. Avoid freeze / thaw cycles.

Buffer: PBS with 0.01% thimerosal, 50% glycerol, pH7.3.

Validation Data



Western blot analysis of lysates from A-549 cells, using SMPD4 Rabbit pAb (A15473) at 1:1000 dilution.

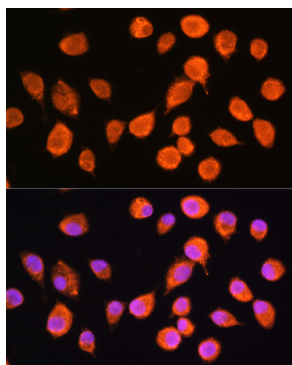
Secondary antibody: HRP-conjugated Goat anti-Rabbit IgG (H+L) (AS014) at 1:10000 dilution.

Lysates/proteins: 25µg per lane.

Blocking buffer: 3% nonfat dry milk in TBST.

Detection: ECL Basic Kit (RM00020).

Exposure time: 15s.



Immunofluorescence analysis of L929 cells using SMPD4 Rabbit pAb (A15473) at dilution of 1:100.

Secondary antibody: Cy3-conjugated Goat anti-Rabbit IgG (H+L) (AS007) at 1:500 dilution. Blue: DAPI for nuclear staining.