

A15472

Leader in Biomolecular Solutions for Life Science



CDCA7L Rabbit pAb

Catalog No.: A15472

Basic Information

Observed MW

52kDa

Calculated MW

52kDa

Category

Polyclonal Antibody

Applications

WB,ELISA

Cross-Reactivity

Human,Mouse,Rat

Background

Acts upstream of or within positive regulation of cell population proliferation. Located in cytosol; fibrillar center; and nucleoplasm.

Recommended Dilutions

WB 1:200 - 1:2000

ELISA Recommended starting concentration is 1 µg/mL. Please optimize the concentration based on your specific assay requirements.

Immunogen Information

Gene ID

55536

Swiss Prot

Q96GN5

Immunogen

Recombinant fusion protein containing a sequence corresponding to amino acids 1-300 of human CDCA7L (NP_061189.2).

Synonyms

R1; JPO2; RAM2; CDCA7L

Contact

 www.abclonal.com

Product Information

Source

Rabbit

Isotype

IgG

Purification

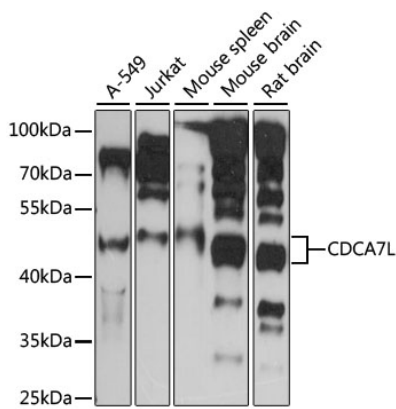
Affinity purification

Storage

Store at -20°C. Avoid freeze / thaw cycles.

Buffer: PBS with 0.01% thimerosal, 50% glycerol, pH7.3.

Validation Data



Western blot analysis of various lysates using CDCA7L Rabbit pAb (A15472) at 1:1000 dilution.
Secondary antibody: HRP-conjugated Goat anti-Rabbit IgG (H+L) (AS014) at 1:10000 dilution.
Lysates/proteins: 25µg per lane.
Blocking buffer: 3% nonfat dry milk in TBST.
Detection: ECL Basic Kit (RM00020).
Exposure time: 90s.