

A15465

Leader in Biomolecular Solutions for Life Science



# LINS1 Rabbit pAb

Catalog No.: A15465

## Basic Information

---

### Observed MW

50kDa

### Calculated MW

86kDa

### Category

Polyclonal Antibody

### Applications

WB,ELISA

### Cross-Reactivity

Human,Mouse,Rat

## Background

---

The Drosophila segment polarity gene *lin* encodes a protein, *lines*, which plays important roles in development of the epidermis and hindgut. This gene encodes a protein containing a *lines*-like domain. This gene is located on chromosome 15 and clustered with the gene encoding ankyrin repeat and SOCS box-containing protein 7. Alternative splicing results in multiple transcript variants.

## Recommended Dilutions

---

**WB** 1:200 - 1:2000

**ELISA** Recommended starting concentration is 1 µg/mL. Please optimize the concentration based on your specific assay requirements.

## Immunogen Information

---

### Gene ID

55180

### Swiss Prot

Q8NG48

### Immunogen

Recombinant protein (or fragment). This information is considered to be commercially sensitive.

### Synonyms

LINS; MRT27; WINS1; LINS1

## Contact

---

 [www.abclonal.com](http://www.abclonal.com)

## Product Information

---

### Source

Rabbit

### Isotype

IgG

### Purification

Affinity purification

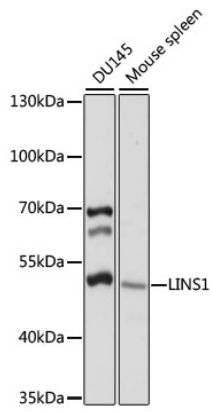
### Storage

Store at -20°C. Avoid freeze / thaw cycles.

Buffer: PBS with 0.01% thimerosal, 50% glycerol, pH7.3.

## Validation Data

---



Western blot analysis of various lysates using LINS1 Rabbit pAb (A15465) at 1:1000 dilution.  
Secondary antibody: HRP-conjugated Goat anti-Rabbit IgG (H+L) (AS014) at 1:10000 dilution.  
Lysates/proteins: 25µg per lane.  
Blocking buffer: 3% nonfat dry milk in TBST.  
Detection: ECL Basic Kit (RM00020).  
Exposure time: 10s.