

A15449

Leader in Biomolecular Solutions for Life Science



ANAPC11 Rabbit pAb

Catalog No.: A15449

Basic Information

Observed MW

12kDa

Calculated MW

10kDa

Category

Polyclonal Antibody

Applications

WB,IHC-P,IF/ICC,ELISA

Cross-Reactivity

Human,Mouse

Background

Enables cullin family protein binding activity and ubiquitin-ubiquitin ligase activity. Contributes to ubiquitin-protein transferase activity. Involved in protein K11-linked ubiquitination. Located in nucleolus and nucleoplasm. Part of anaphase-promoting complex.

Recommended Dilutions

WB 1:200 - 1:2000

IHC-P 1:50 - 1:200

IF/ICC 1:50 - 1:200

ELISA Recommended starting concentration is 1 µg/mL. Please optimize the concentration based on your specific assay requirements.

Immunogen Information

Gene ID

51529

Swiss Prot

Q9NYG5

Immunogen

Recombinant protein (or fragment). This information is considered to be commercially sensitive.

Synonyms

APC11; Apc11p; HSPC214; ANAPC11

Product Information

Source

Rabbit

Isotype

IgG

Purification

Affinity purification

Storage

Store at -20°C. Avoid freeze / thaw cycles.

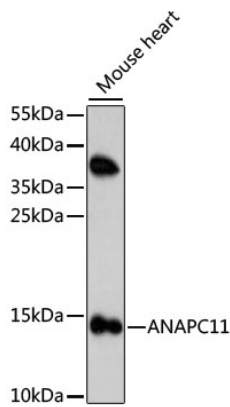
Buffer: PBS with 0.01% thimerosal, 50% glycerol, pH7.3.

Contact



www.abclonal.com

Validation Data



Western blot analysis of lysates from mouse heart, using ANAPC11 Rabbit pAb (A15449) at 1:1000 dilution.

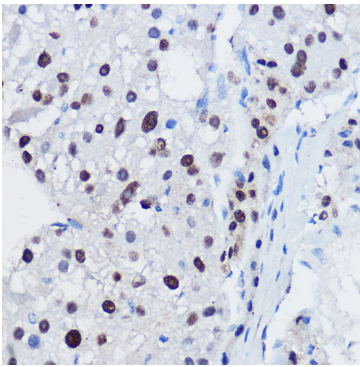
Secondary antibody: HRP-conjugated Goat anti-Rabbit IgG (H+L) (AS014) at 1:10000 dilution.

Lysates/proteins: 25µg per lane.

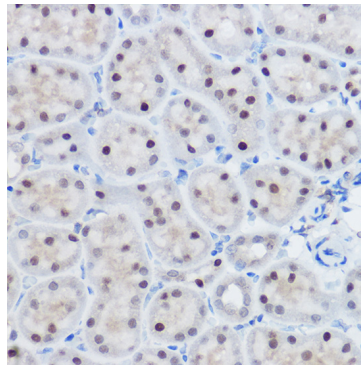
Blocking buffer: 3% nonfat dry milk in TBST.

Detection: ECL Enhanced Kit (RM00021).

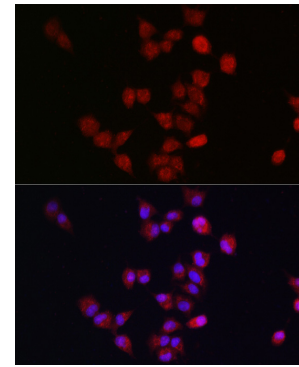
Exposure time: 120s.



Immunohistochemistry analysis of paraffin-embedded Human liver cancer using ANAPC11 Rabbit pAb (A15449) at dilution of 1:100 (40x lens). High pressure antigen retrieval performed with 0.01M Citrate buffer (pH 6.0) prior to IHC staining.



Immunohistochemistry analysis of paraffin-embedded Mouse kidney using ANAPC11 Rabbit pAb (A15449) at dilution of 1:100 (40x lens). High pressure antigen retrieval performed with 0.01M Citrate buffer (pH 6.0) prior to IHC staining.



Immunofluorescence analysis of A-549 cells using ANAPC11 Rabbit pAb (A15449) at dilution of 1:300. Secondary antibody: Cy3-conjugated Goat anti-Rabbit IgG (H+L) (AS007) at 1:500 dilution. Blue: DAPI for nuclear staining.