

A15318

Leader in Biomolecular Solutions for Life Science



## SHB Rabbit pAb

Catalog No.: A15318

### Basic Information

#### Observed MW

55kDa

#### Calculated MW

55kDa

#### Category

Polyclonal Antibody

#### Applications

WB,ELISA

#### Cross-Reactivity

Human,Mouse,Rat

### Background

Enables phosphotyrosine residue binding activity. Predicted to be involved in several processes, including angiogenesis; apoptotic process; and signal transduction. Predicted to act upstream of or within several processes, including hematopoietic stem cell proliferation; negative regulation of oocyte maturation; and positive regulation of immune response. Located in cytoplasmic ribonucleoprotein granule; cytosol; and nucleoplasm.

### Recommended Dilutions

**WB** 1:200 - 1:2000

**ELISA** Recommended starting concentration is 1 µg/mL. Please optimize the concentration based on your specific assay requirements.

### Immunogen Information

#### Gene ID

6461

#### Swiss Prot

Q15464

#### Immunogen

Recombinant protein (or fragment). This information is considered to be commercially sensitive.

#### Synonyms

bA3J10.2; SHB

### Contact



[www.abclonal.com](http://www.abclonal.com)

### Product Information

#### Source

Rabbit

#### Isotype

IgG

#### Purification

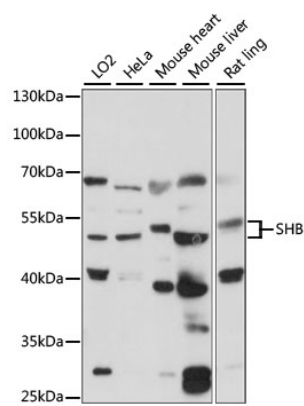
Affinity purification

#### Storage

Store at -20°C. Avoid freeze / thaw cycles.

Buffer: PBS with 0.01% thimerosal, 50% glycerol, pH7.3.

# Validation Data



Western blot analysis of various lysates using SHB Rabbit pAb (A15318) at 1:1000 dilution.  
Secondary antibody: HRP-conjugated Goat anti-Rabbit IgG (H+L) (AS014) at 1:10000 dilution.  
Lysates/proteins: 25µg per lane.  
Blocking buffer: 3% nonfat dry milk in TBST.  
Detection: ECL Basic Kit (RM00020).  
Exposure time: 90s.