

A15312

Leader in Biomolecular Solutions for Life Science



RNASE6 Rabbit pAb

Catalog No.: A15312

Basic Information

Observed MW

17kDa

Calculated MW

17kDa

Category

Polyclonal Antibody

Applications

WB,IHC-P,ELISA,IF-P

Cross-Reactivity

Human,Mouse,Rat

Background

The protein encoded by this gene is a member of the ribonuclease A superfamily and functions in the urinary tract. The protein has broad-spectrum antimicrobial activity against pathogenic bacteria.

Recommended Dilutions

WB 1:200 - 1:2000

IF-P 1:50 - 1:200

IHC-P 1:50 - 1:200

ELISA Recommended starting concentration is 1 µg/mL. Please optimize the concentration based on your specific assay requirements.

Immunogen Information

Gene ID

6039

Swiss Prot

Q93091

Immunogen

Recombinant protein (or fragment). This information is considered to be commercially sensitive.

Synonyms

RAD1; RNS6; RNasek6; RNASE6

Product Information

Source

Rabbit

Isotype

IgG

Purification

Affinity purification

Storage

Store at -20°C. Avoid freeze / thaw cycles.

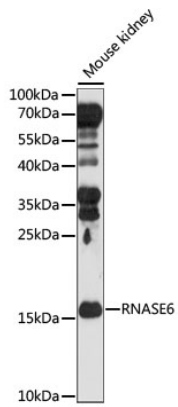
Buffer: PBS with 0.01% thimerosal, 50% glycerol, pH7.3.

Contact



www.abclonal.com

Validation Data



Western blot analysis of lysates from Mouse kidney, using RNASE6 Rabbit pAb (A15312) at 1:1000 dilution.

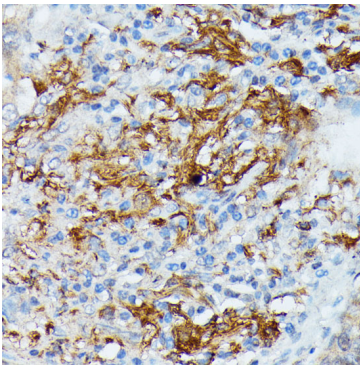
Secondary antibody: HRP-conjugated Goat anti-Rabbit IgG (H+L) (AS014) at 1:10000 dilution.

Lysates/proteins: 25µg per lane.

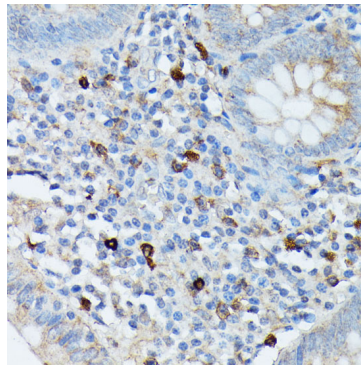
Blocking buffer: 3% nonfat dry milk in TBST.

Detection: ECL Basic Kit (RM00020).

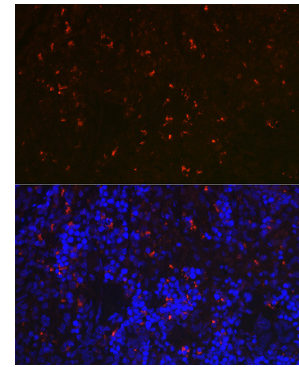
Exposure time: 90s.



Immunohistochemistry analysis of paraffin-embedded Human lung cancer using RNASE6 Rabbit pAb (A15312) at dilution of 1:100 (40x lens). Microwave antigen retrieval performed with 0.01M PBS Buffer (pH 7.2) prior to IHC staining.



Immunohistochemistry analysis of paraffin-embedded Human appendix using RNASE6 Rabbit pAb (A15312) at dilution of 1:100 (40x lens). Microwave antigen retrieval performed with 0.01M PBS Buffer (pH 7.2) prior to IHC staining.



Immunofluorescence analysis of paraffin-embedded rat spleen using RNASE6 Rabbit pAb (A15312) at dilution of 1:100 (40x lens). Secondary antibody: Cy3-conjugated Goat anti-Rabbit IgG (H+L) (AS007) at 1:500 dilution. Blue: DAPI for nuclear staining.