

A15302

Leader in Biomolecular Solutions for Life Science



PLCL1 Rabbit pAb

Catalog No.: A15302

Basic Information

Observed MW

140kDa

Calculated MW

123kDa

Category

Polyclonal Antibody

Applications

WB, ELISA

Cross-Reactivity

Mouse, Rat

Background

Predicted to enable phospholipase C activity. Predicted to be involved in negative regulation of cold-induced thermogenesis and phosphatidylinositol-mediated signaling. Predicted to act upstream of or within several processes, including gamma-aminobutyric acid signaling pathway; regulation of GABAergic synaptic transmission; and regulation of peptidyl-serine phosphorylation. Predicted to be located in cytoplasm and plasma membrane.

Recommended Dilutions

WB 1:200 - 1:2000

ELISA Recommended starting concentration is 1 µg/mL. Please optimize the concentration based on your specific assay requirements.

Immunogen Information

Gene ID

5334

Swiss Prot

Q15111

Immunogen

Recombinant fusion protein containing a sequence corresponding to amino acids 110-350 of human PLCL1 (NP_006217.3).

Synonyms

PLCE; PLCL; PRIP; PLDL1; PPP1R127; PLCL1

Contact

 www.abclonal.com

Product Information

Source

Rabbit

Isotype

IgG

Purification

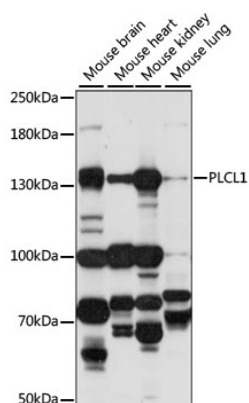
Affinity purification

Storage

Store at -20°C. Avoid freeze / thaw cycles.

Buffer: PBS with 0.01% thimerosal, 50% glycerol, pH 7.3.

Validation Data



Western blot analysis of various lysates using PLCL1 Rabbit pAb (A15302) at 1:1000 dilution.

Secondary antibody: HRP-conjugated Goat anti-Rabbit IgG (H+L) (AS014) at 1:10000 dilution.

Lysates/proteins: 25µg per lane.

Blocking buffer: 3% nonfat dry milk in TBST.

Detection: ECL Basic Kit (RM00020).

Exposure time: 30s.