

A15297

Leader in Biomolecular Solutions for Life Science



SERPINB2 Rabbit pAb

Catalog No.: A15297

3 Publications

Basic Information

Observed MW

47kDa

Calculated MW

47kDa

Category

Polyclonal Antibody

Applications

WB,ELISA

Cross-Reactivity

Human

Background

Predicted to enable serine-type endopeptidase inhibitor activity. Predicted to be involved in negative regulation of endopeptidase activity. Predicted to be located in extracellular region and plasma membrane. Predicted to be active in extracellular space.

Recommended Dilutions

WB 1:200 - 1:2000

ELISA Recommended starting concentration is 1 µg/mL. Please optimize the concentration based on your specific assay requirements.

Immunogen Information

Gene ID

5055

Swiss Prot

P05120

Immunogen

Recombinant protein (or fragment). This information is considered to be commercially sensitive.

Synonyms

PAI; PAI2; PAI-2; PLANH2; HsT1201; SERPINB2

Contact



www.abclonal.com

Product Information

Source

Rabbit

Isotype

IgG

Purification

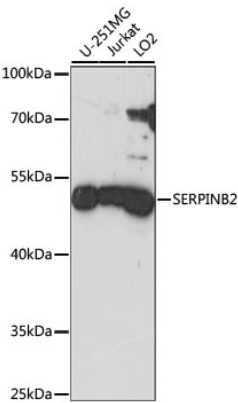
Affinity purification

Storage

Store at -20°C. Avoid freeze / thaw cycles.

Buffer: PBS with 0.01% thimerosal, 50% glycerol, pH7.3.

Validation Data



Western blot analysis of various lysates using SERPINB2 Rabbit pAb (A15297) at 1:1000 dilution.
Secondary antibody: HRP-conjugated Goat anti-Rabbit IgG (H+L) (AS014) at 1:10000 dilution.
Lysates/proteins: 25µg per lane.
Blocking buffer: 3% nonfat dry milk in TBST.
Detection: ECL Basic Kit (RM00020).
Exposure time: 90s.