

A15260

Leader in Biomolecular Solutions for Life Science



CACNA2D1 Rabbit pAb

Catalog No.: A15260

1 Publications

Basic Information

Observed MW

124kDa/150kDa

Calculated MW

125kDa

Category

Polyclonal Antibody

Applications

WB,ELISA

Cross-Reactivity

Human,Mouse

Background

The preproprotein encoded by this gene is cleaved into multiple chains that comprise the alpha-2 and delta subunits of the voltage-dependent calcium channel complex. Calcium channels mediate the influx of calcium ions into the cell upon membrane polarization. Mutations in this gene can cause cardiac deficiencies, including Brugada syndrome and short QT syndrome. Alternate splicing results in multiple transcript variants, some of which may lack the delta subunit portion.

Recommended Dilutions

WB 1:200 - 1:2000

ELISA Recommended starting concentration is 1 µg/mL. Please optimize the concentration based on your specific assay requirements.

Immunogen Information

Gene ID

781

Swiss Prot

P54289

Immunogen

Recombinant protein (or fragment). This information is considered to be commercially sensitive.

Synonyms

CACNA2; CCHL2A; DEE110; CACNL2A; LINC01112; lncRNA-N3; CACNA2D1

Contact

 www.abclonal.com

Product Information

Source

Rabbit

Isotype

IgG

Purification

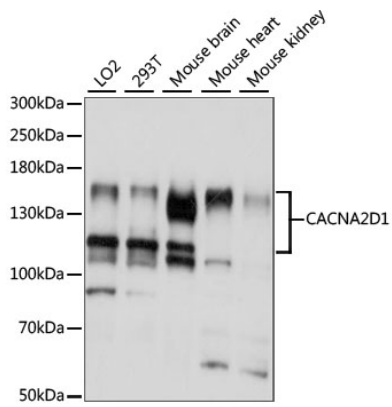
Affinity purification

Storage

Store at -20°C. Avoid freeze / thaw cycles.

Buffer: PBS with 0.01% thimerosal, 50% glycerol, pH7.3.

Validation Data



Western blot analysis of various lysates using CACNA2D1 Rabbit pAb (A15260) at 1:1000 dilution.
Secondary antibody: HRP-conjugated Goat anti-Rabbit IgG (H+L) (AS014) at 1:10000 dilution.
Lysates/proteins: 25µg per lane.
Blocking buffer: 3% nonfat dry milk in TBST.
Detection: ECL Basic Kit (RM00020).
Exposure time: 5S.