

A15249

Leader in Biomolecular Solutions for Life Science



TRAK1 Rabbit pAb

Catalog No.: A15249

Basic Information

Observed MW

130kDa

Calculated MW

106kDa

Category

Polyclonal Antibody

Applications

WB,ELISA

Cross-Reactivity

Human,Mouse,Rat

Background

Predicted to enable GABA receptor binding activity and myosin binding activity. Involved in endosome to lysosome transport. Located in early endosome and mitochondrion. Implicated in developmental and epileptic encephalopathy 68.

Recommended Dilutions

WB 1:500 - 1:2000

ELISA Recommended starting concentration is 1 µg/mL. Please optimize the concentration based on your specific assay requirements.

Immunogen Information

Gene ID

22906

Swiss Prot

Q9UPV9

Immunogen

Recombinant protein (or fragment). This information is considered to be commercially sensitive.

Synonyms

DEE68; MILT1; EIEE68; OIP106; TRAK1

Contact

 www.abclonal.com

Product Information

Source

Rabbit

Isotype

IgG

Purification

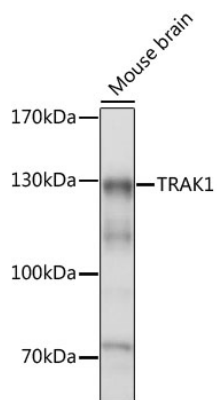
Affinity purification

Storage

Store at -20°C. Avoid freeze / thaw cycles.

Buffer: PBS with 0.01% thimerosal, 50% glycerol, pH7.3.

Validation Data



Western blot analysis of lysates from mouse brain, using TRAK1 Rabbit pAb (A15249) at 1:1000 dilution.

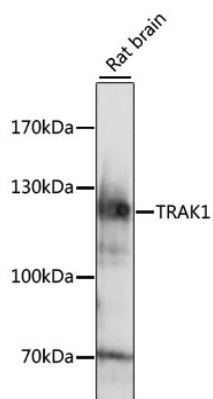
Secondary antibody: HRP-conjugated Goat anti-Rabbit IgG (H+L) (AS014) at 1:10000 dilution.

Lysates/proteins: 25µg per lane.

Blocking buffer: 3% nonfat dry milk in TBST.

Detection: ECL Basic Kit (RM00020).

Exposure time: 30s.



Western blot analysis of lysates from rat brain, using TRAK1 Rabbit pAb (A15249) at 1:1000 dilution.

Secondary antibody: HRP-conjugated Goat anti-Rabbit IgG (H+L) (AS014) at 1:10000 dilution.

Lysates/proteins: 25µg per lane.

Blocking buffer: 3% nonfat dry milk in TBST.

Detection: ECL Basic Kit (RM00020).

Exposure time: 60s.