

A15247

Leader in Biomolecular Solutions for Life Science



SIK1 Rabbit pAb

Catalog No.: A15247

Basic Information

Observed MW

80kDa

Calculated MW

85kDa

Category

Polyclonal Antibody

Applications

WB,ELISA

Cross-Reactivity

Human,Mouse

Background

This gene encodes a serine/threonine protein kinase that contains a ubiquitin-associated (UBA) domain. The encoded protein is a member of the adenosine monophosphate-activated kinase (AMPK) subfamily of kinases that play a role in conserved signal transduction pathways. A mutation in this gene is associated with early infantile epileptic encephalopathy 30.

Recommended Dilutions

WB 1:500 - 1:1000

ELISA Recommended starting concentration is 1 µg/mL. Please optimize the concentration based on your specific assay requirements.

Immunogen Information

Gene ID

150094

Swiss Prot

P57059

Immunogen

Synthetic peptide. This information is considered to be commercially sensitive.

Synonyms

MSK; SIK; DEE30; SIK-1; SIK1B; SNF1LK; SIK1

Contact

 www.abclonal.com

Product Information

Source

Rabbit

Isotype

IgG

Purification

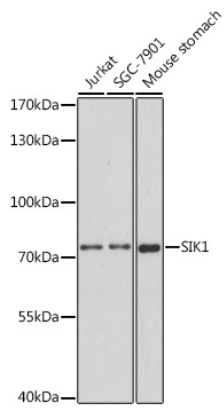
Affinity purification

Storage

Store at -20°C. Avoid freeze / thaw cycles.

Buffer: PBS with 0.01% thimerosal, 50% glycerol, pH7.3.

Validation Data



Western blot analysis of various lysates using SIK1 Rabbit pAb (A15247) at 1:1000 dilution.

Secondary antibody: HRP-conjugated Goat anti-Rabbit IgG (H+L) (AS014) at 1:10000 dilution.

Lysates/proteins: 25µg per lane.

Blocking buffer: 3% nonfat dry milk in TBST.

Detection: ECL Basic Kit (RM00020).

Exposure time: 150s.